

Brocade SANnav Management Portal and SANnav Global View

Brocade switch management software

Lenovo

Fabric management application

Lenovo offers optional Brocade SANnav Management Portal and SANnav Global View software license subscriptions that provide comprehensive visibility into the SAN environment, allowing administrators to quickly identify, isolate, and correct problems, and accelerate administrative tasks by simplifying and automating workflows.

SANnav Management Portal supports all Brocade SAN switches and platforms that run Fabric OS version 7.4 or later, including Lenovo B300, B6505, B6510, DB610S, DB620S, DB400D, DB710S, DB720S, DB730S, DB800D, Brocade Directors, and FC5022.

With SANnav Global View, administrators can quickly visualize the health, performance, and inventory of multiple SANnav Management Portal instances using a simple, intelligent dashboard and can easily navigate from a global view down to local environments to investigate points of interest. SANnav Global View is designed to manage up to 20 SANnav Management Portal instances and up to 120,000 ports.

Note: For more information, refer to the SANnav Management Portal and SANnav Global View [FAQs](#).

SANnav Management Portal

SANnav Management Portal is a next-generation SAN management application with a simple browser-based user interface (UI) and a focus on streamlining common workflows, such as configuration, zoning, deployment, monitoring, troubleshooting, reporting, and analytics.

Lenovo offers the following SANnav Management Portal subscriptions:

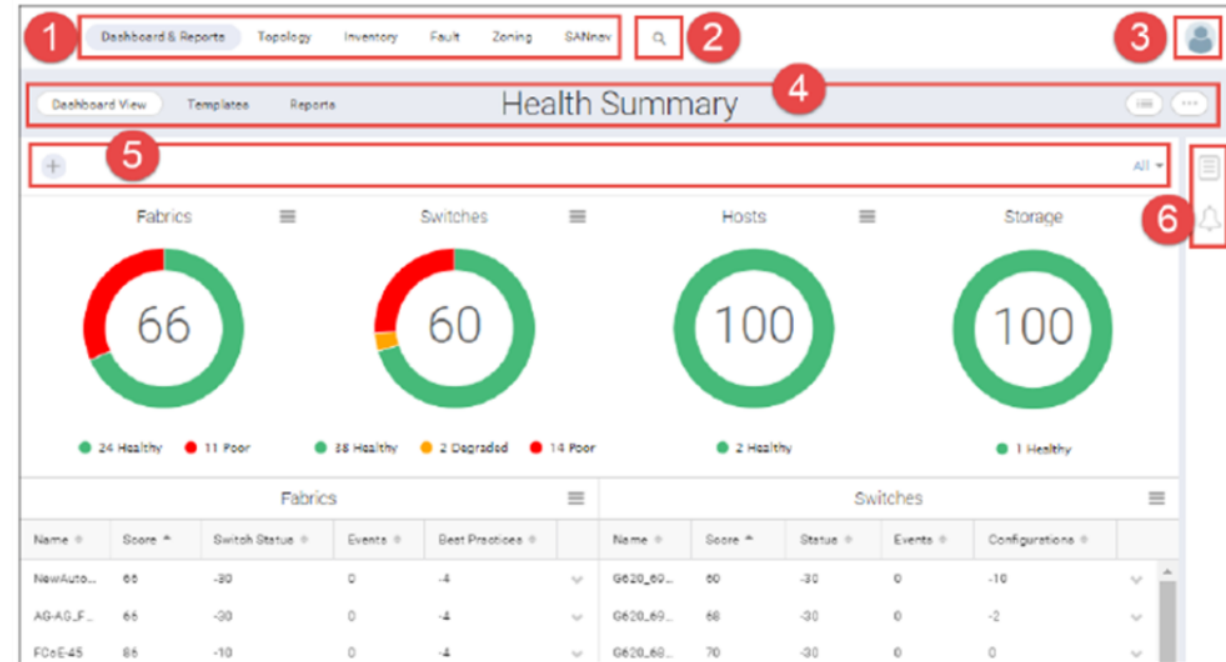
- SANnav Management Portal Base – Designed for mid-sized SANs, it can manage up to 600 SAN switch ports (SAN director ports can only be managed with the Enterprise edition)
- SANnav Management Portal Enterprise – Designed for enterprise-class SANs, it can manage up to 15,000 SAN switch and director ports

For more information, refer to this [SANnav Management Portal documentation](#).



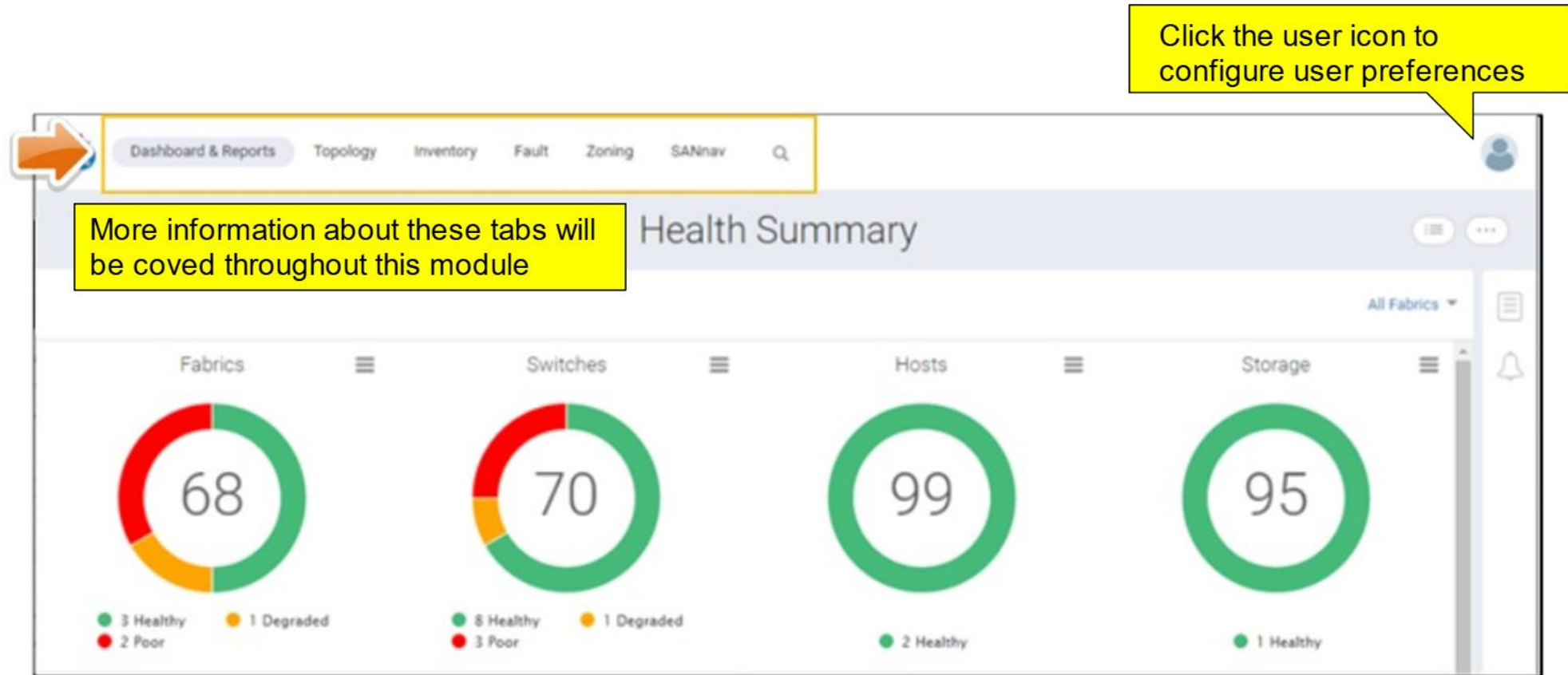
SANnav Management Portal user interface

1. Navigation bar – Click these options to access specific feature pages
2. Global search – Click the magnifying glass icon, select a search context, and then enter the search term in the field
3. Profile menu – Contains links to help users change user preferences, display the SANnav version, and log out
4. Subnavigation bar – Provides the page title and optional item count within parentheses – the subnavigation bar is the main way to navigate within a feature
5. Filter bar – Allows users to filter the display based on columns, fabrics, and customized filters
6. Expandable sidebar – Provides options for saving selected inventory items for later investigation and for checking notifications



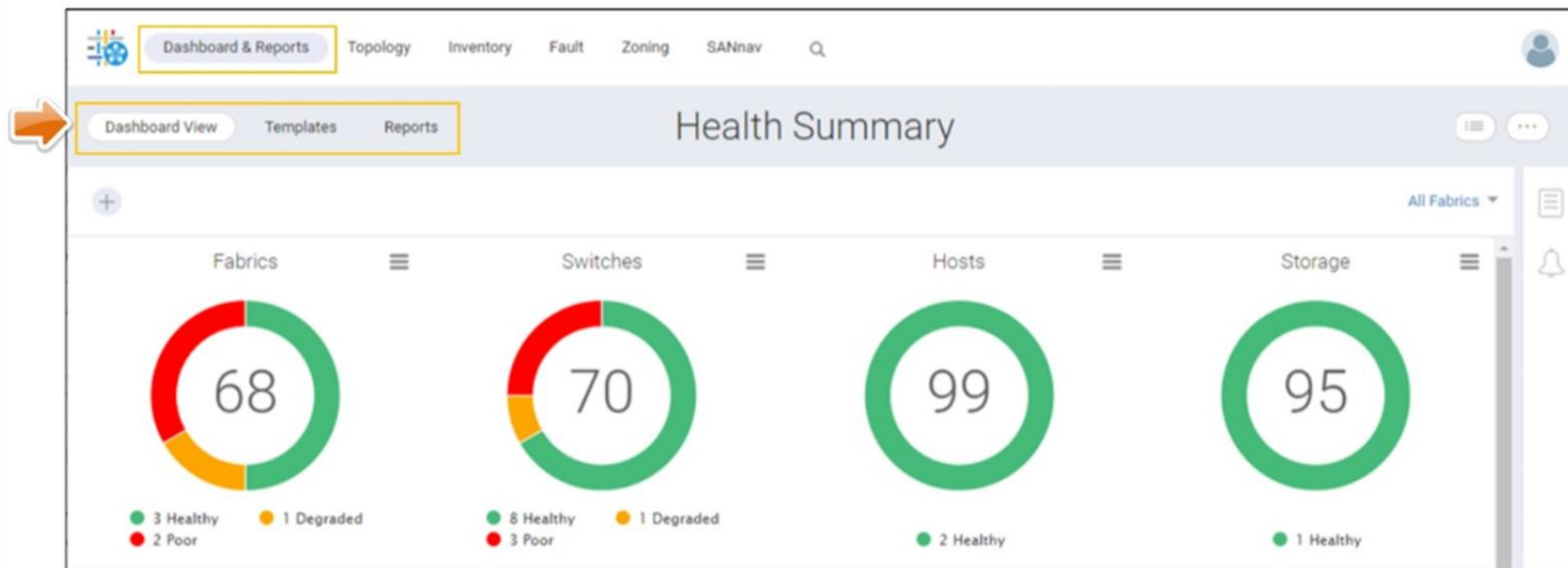
SANnav Management Portal tabs

There are seven tabs on the navigation bar: **Dashboard & Reports**, **Topology**, **Inventory**, **Fault**, **Zoning**, **SANnav**, and a magnifying glass icon for Global Search



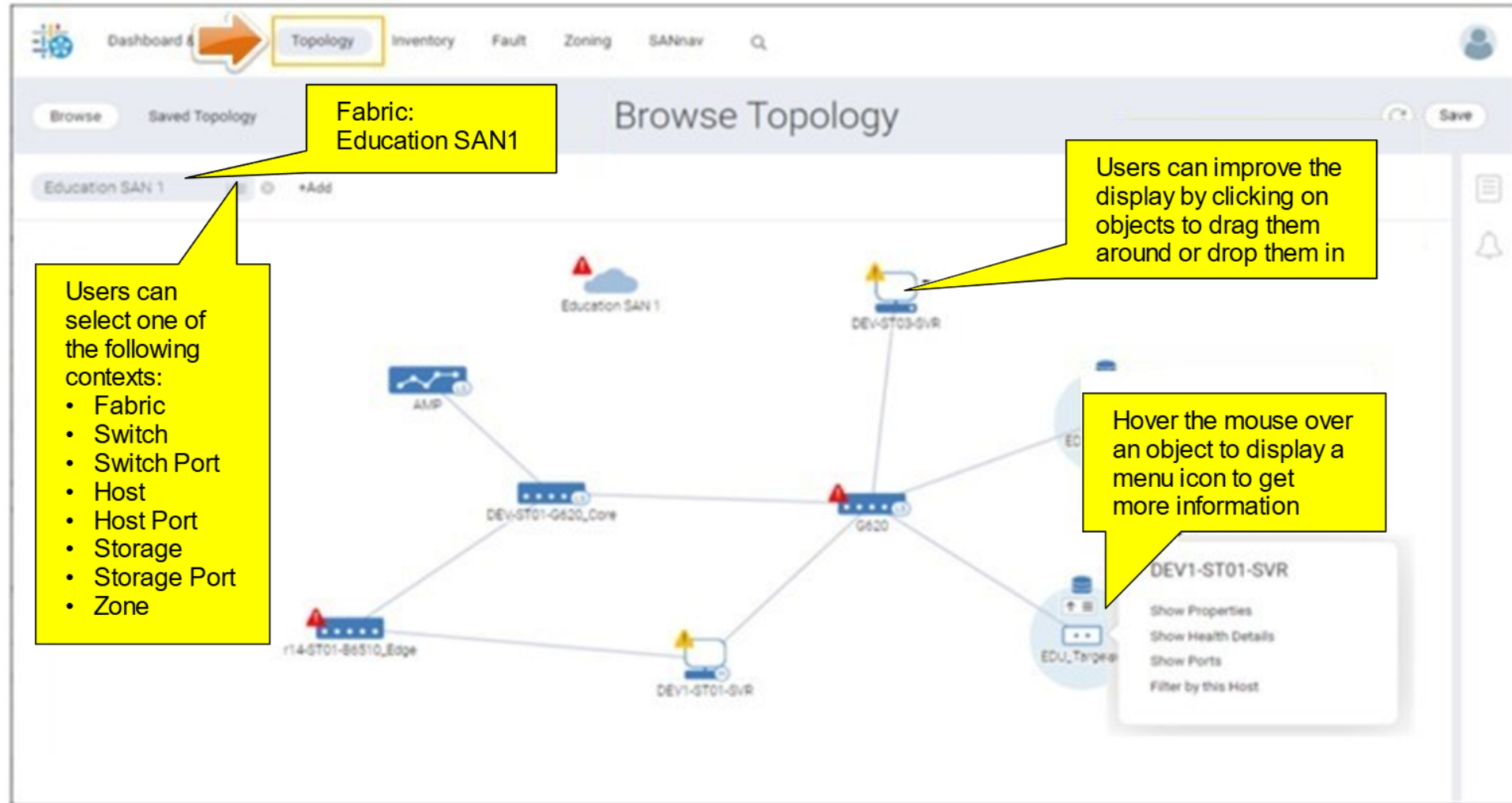
Dashboard & Reports

- **Dashboard View** is the Health Summary dashboard
Overall health is determined by the health score: Over 90 is **Healthy**, 71 through 90 is **Degraded**, and 70 or less is **Poor**
- Use **Templates** to create custom dashboards and reports
- Use **Reports** to check and export reports



Topology

This figure shows an example of a fabric including end devices.



Inventory

On the **Inventory** page, users check and manage the inventory of all discovered **Switches**, **Switch Ports**, **Hosts**, **Host Ports**, **Virtual Machines** (if vCenter has been discovered), **Storage**, **Storage Ports**, **Fabrics**, and **Chassis**.

Dashboard & Reports To **Inventory** Fault Zoning SANnav

Fabrics (6)

Supported objects are:

- Switches
- Switch Ports
- Hosts
- Host Ports
- Virtual Machines
- Storage
- Storage Ports
- Fabrics
- Chassis

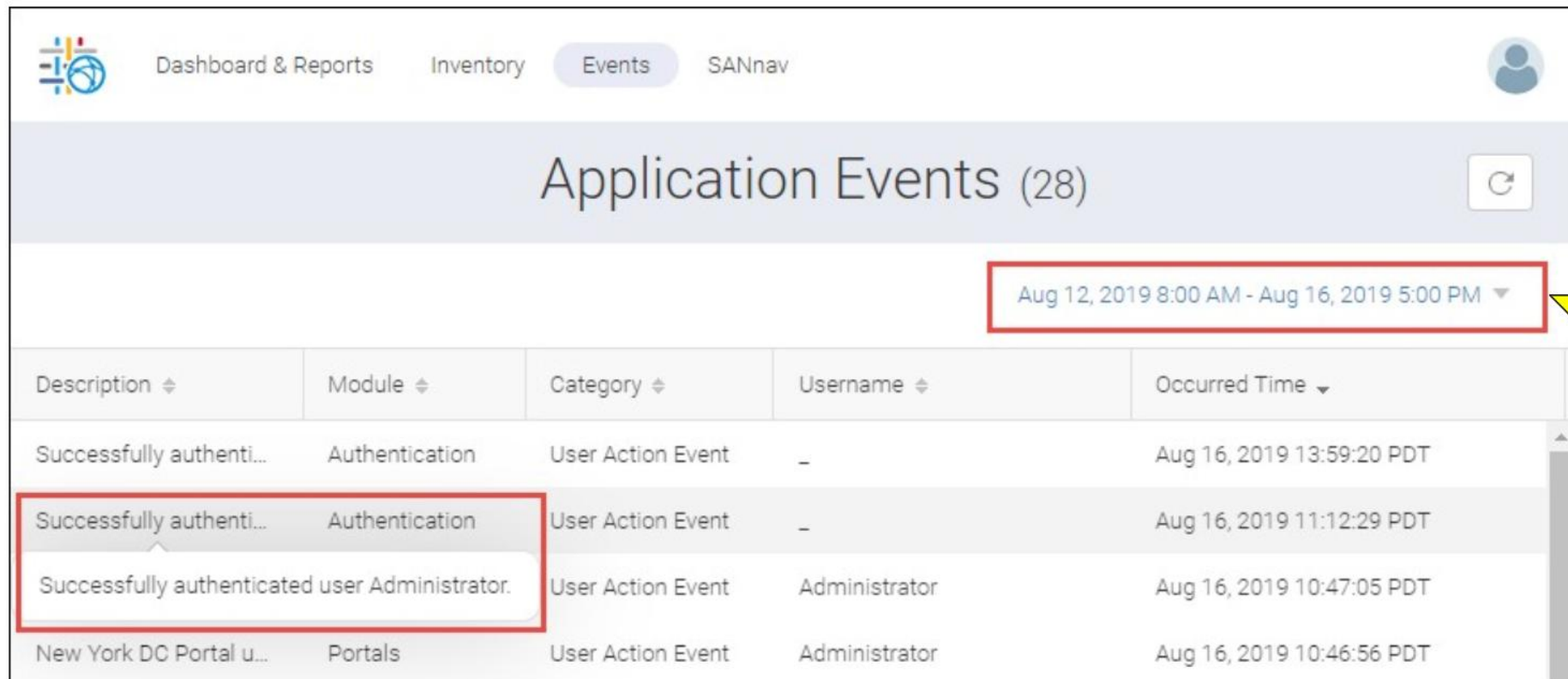
The contents of these drop-down menus will vary depending on the selected object. In this example, **Fabrics** has been selected.

View
Show in Topology
Accept Changes

Seed Sw	Principa	FID	Switch Count	Member	Last Dis
10.124.91.3	10.124.91.3	30	2	-	Feb 28, 202...
10.124.91.24	10.124.91.24	128	1	-	Feb 28, 202...
10.124.91.14	10.124.91.13	-	3	-	Feb 28, 202...
10.124.91.4	10.124.91.5	20	3	New changes	Feb 28, 202...
10.124.91.4	10.124.91.4	128	1	-	Feb 28, 202...
10.124.91.24	10.124.91.24	128	1	New changes	Feb 28, 202...

Events

The **Events** tab lists all the application events stemming from either a user or a system action. System actions are triggered under certain situations, such as when a portal is disconnected.



Application Events (28)				
Aug 12, 2019 8:00 AM - Aug 16, 2019 5:00 PM ▼				
Description	Module	Category	Username	Occurred Time
Successfully authenti...	Authentication	User Action Event	-	Aug 16, 2019 13:59:20 PDT
Successfully authenti...	Authentication	User Action Event	-	Aug 16, 2019 11:12:29 PDT
Successfully authenticated user Administrator.		User Action Event	Administrator	Aug 16, 2019 10:47:05 PDT
New York DC Portal u...	Portals	User Action Event	Administrator	Aug 16, 2019 10:46:56 PDT

A timeframe for the events – the default is **Last 30 minutes**

Users can select a standard timeframe – for example, **Last week** – or a specific date/time range

Zoning

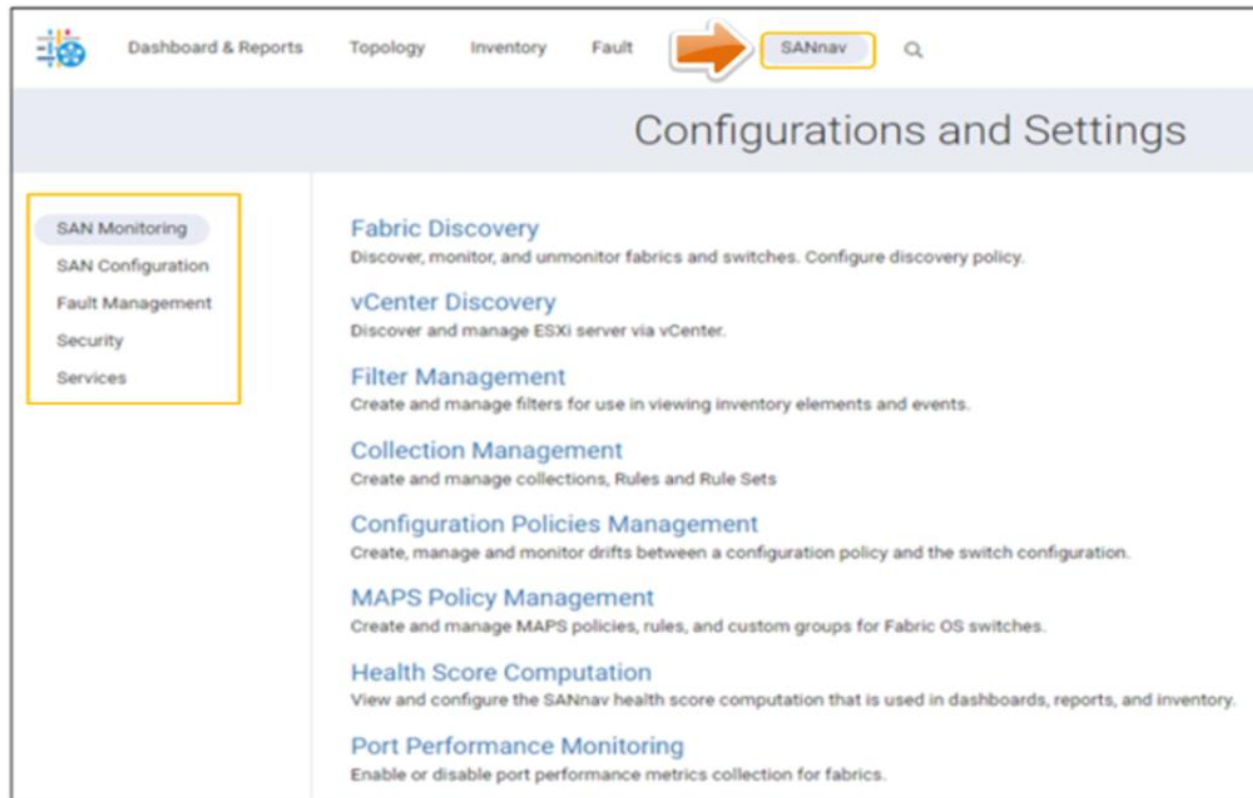
The **Zoning** page has five tabs: **Zone Configurations**, **Zones**, **Zone Aliases**, **Zone Inventory**, and **Policies**. On the **Zone Configurations** tab, select a fabric to show zone configurations or click **+** to add a new configuration.

The screenshot shows the Brocade SANnav Management Portal interface. The top navigation bar includes 'Dashboard & Reports', 'Topology', 'Inventory', 'Fault', 'Zoning', and 'SANnav'. The 'Zoning' tab is selected and highlighted. Below the navigation bar, there are five sub-tabs: 'Zone Configurations', 'Zones', 'Zone Aliases', 'Zone Inventory', and 'Policies'. The 'Zone Configurations' tab is active, showing a table of configurations. A yellow callout box points to the 'Zoning' tab with the text 'Click the tab to display the dashboard'. Another yellow callout box points to the 'Zone Configurations' sub-tab with the text 'Five zoning tabs'. A third yellow callout box points to the 'EDU_Fabric1' dropdown menu with the text 'Select your fabric'. A fourth yellow callout box points to the dropdown arrow with the text 'Click the down arrow to open the drop-down menu'. The dropdown menu is open, showing options: 'View', 'Compare', and 'Show Details'. The table below has columns: Name, Status, Tags, and Description. The data rows are: demo_cfg (Effective), demo_cfg (Defined (Copy)), Production (Defined), and Edu_cfg (Defined).

Name	Status	Tags	Description
demo_cfg	Effective	-	-
demo_cfg	Defined (Copy)	-	-
Production	Defined	-	-
Edu_cfg	Defined	-	-

SANnav

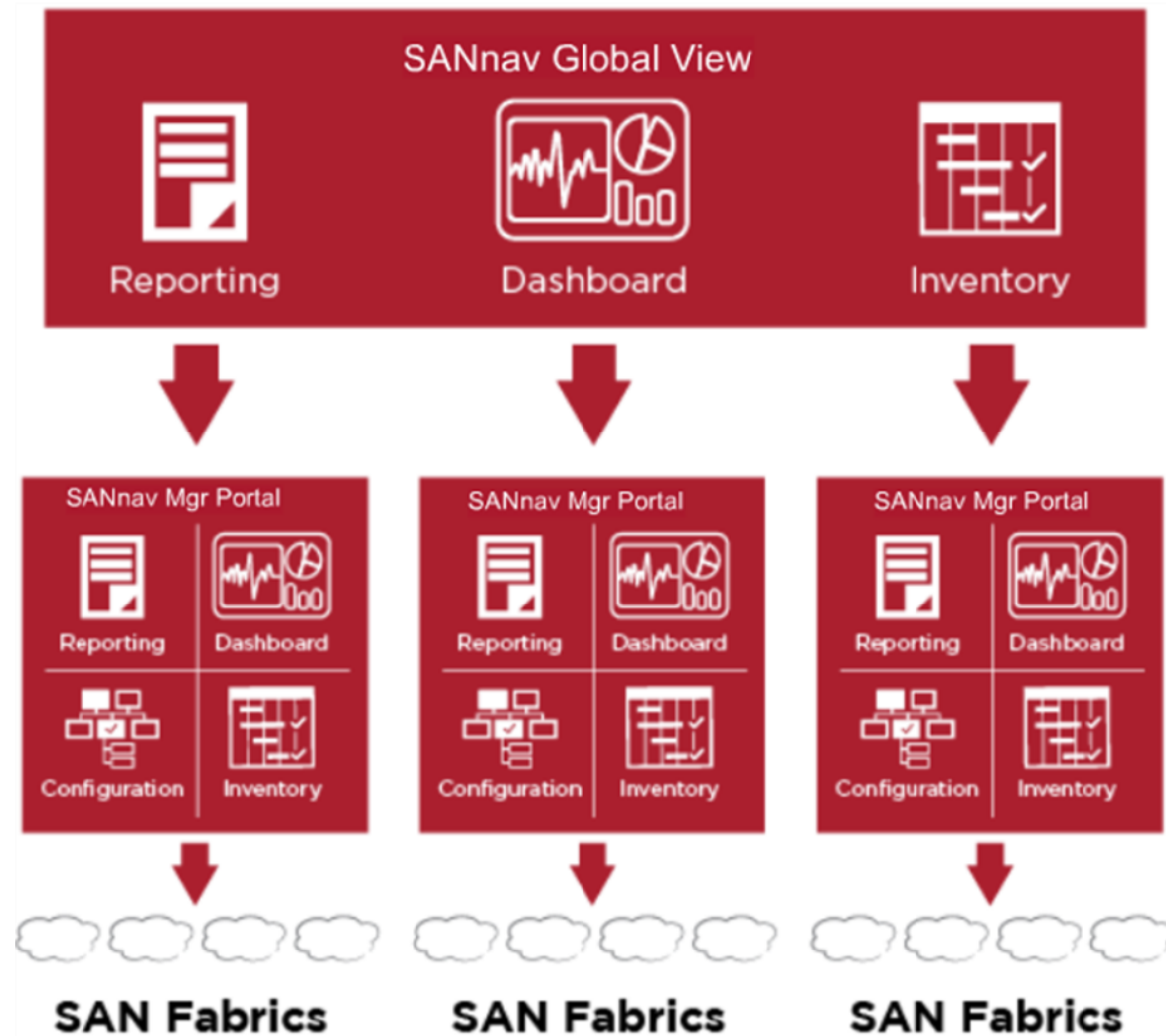
Use the **SANnav** page to manage all the configurations and settings. There are five tabs on this page: **SAN Monitoring**, **SAN Configuration**, **Fault Management**, **Security**, and **Services**. Each of these tabs contains multiple menus.



SANnav Global View

With SANnav Global View, administrators can quickly visualize the health, performance, and inventory of multiple SANnav Management Portal instances using a simple, intelligent dashboard. They can also easily navigate from a global view down to local environments to investigate points of interest.

- SANnav Global View is an independent application
- It collects data from multiple SANnav Management Portals and provides consolidated access
- It consolidates and presents results through the Reporting, Dashboard, and Inventory pages
- Global View is used for monitoring only
 - Configuration is done at the portal level
- Users can launch SANnav Management Portal from a Global session



SANnav Global View user interface

1. Navigation bar – Contains links to feature pages

Go to the **SANnav** page to manage settings and configurations

2. Profile menu – Contains links to help users change user preferences, display the SANnav version, and log out

3. Subnavigation bar – Provides the page title and optional item count within parentheses – the subnavigation bar is the main way to navigate within a feature

4. Filter bar – Allows users to filter the display based on columns, fabrics, and customized filters

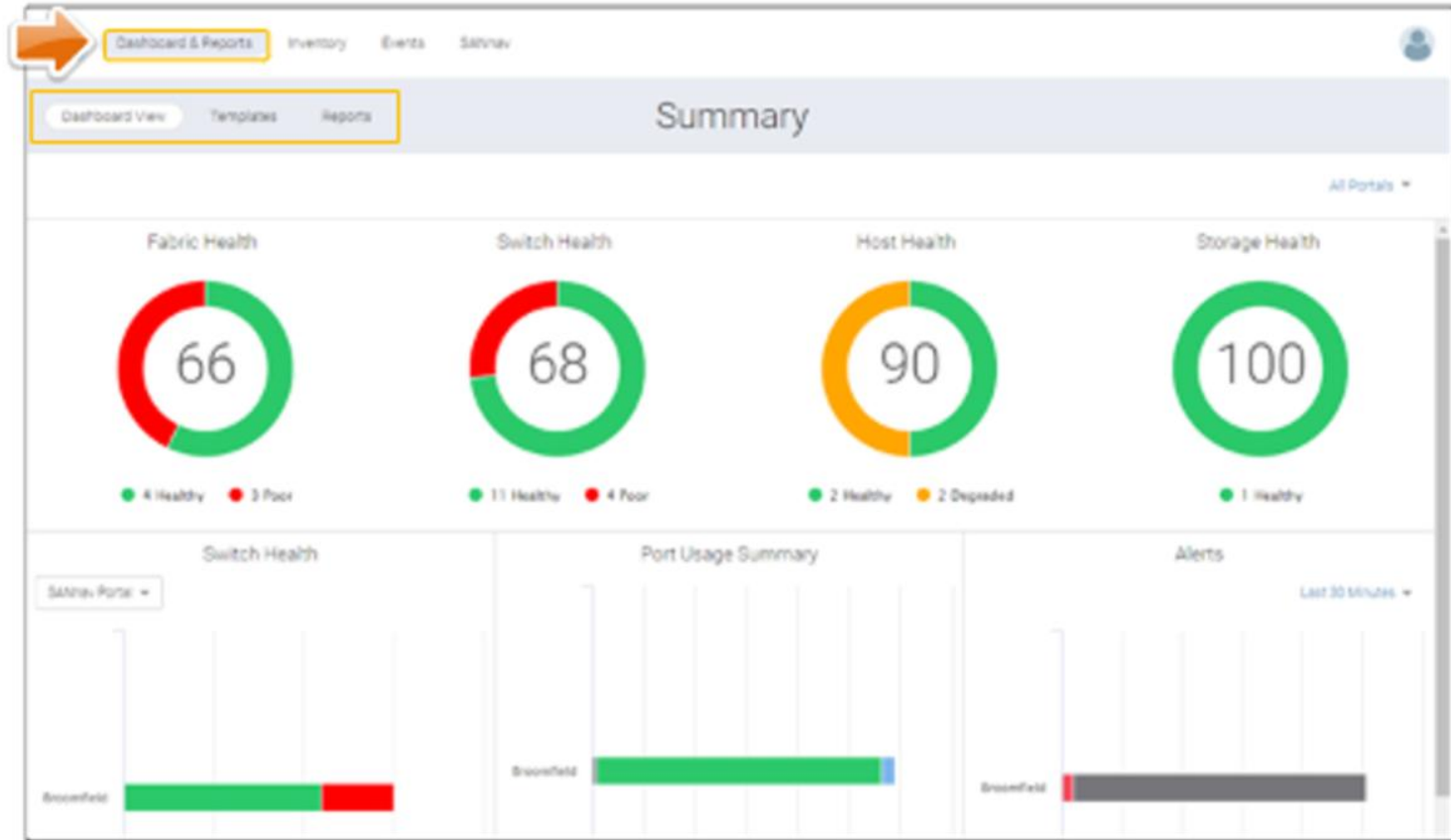


SANnav Global View – Dashboard

- **Dashboard View** is the health summary dashboard that provides global visibility across multiple SANnav Management Portal instances
- Use **Templates** to create custom dashboards and reports
- Use **Reports** to check and export reports

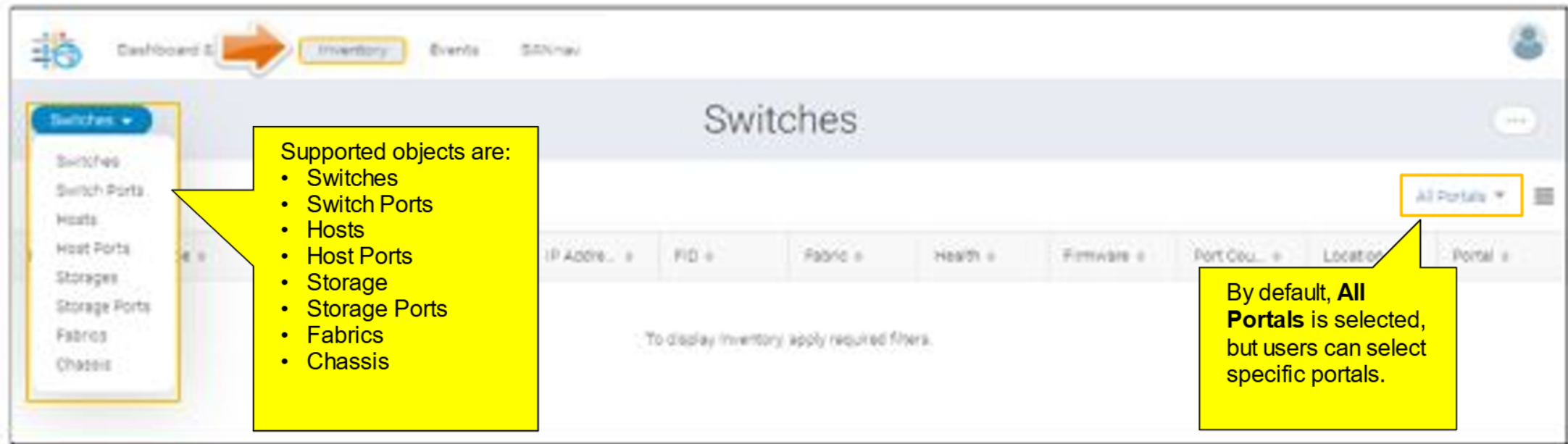
By default, the scope of the dashboard is set to **All Portals**.

You can change the scope by selecting one or more SANnav Management Portal instances.



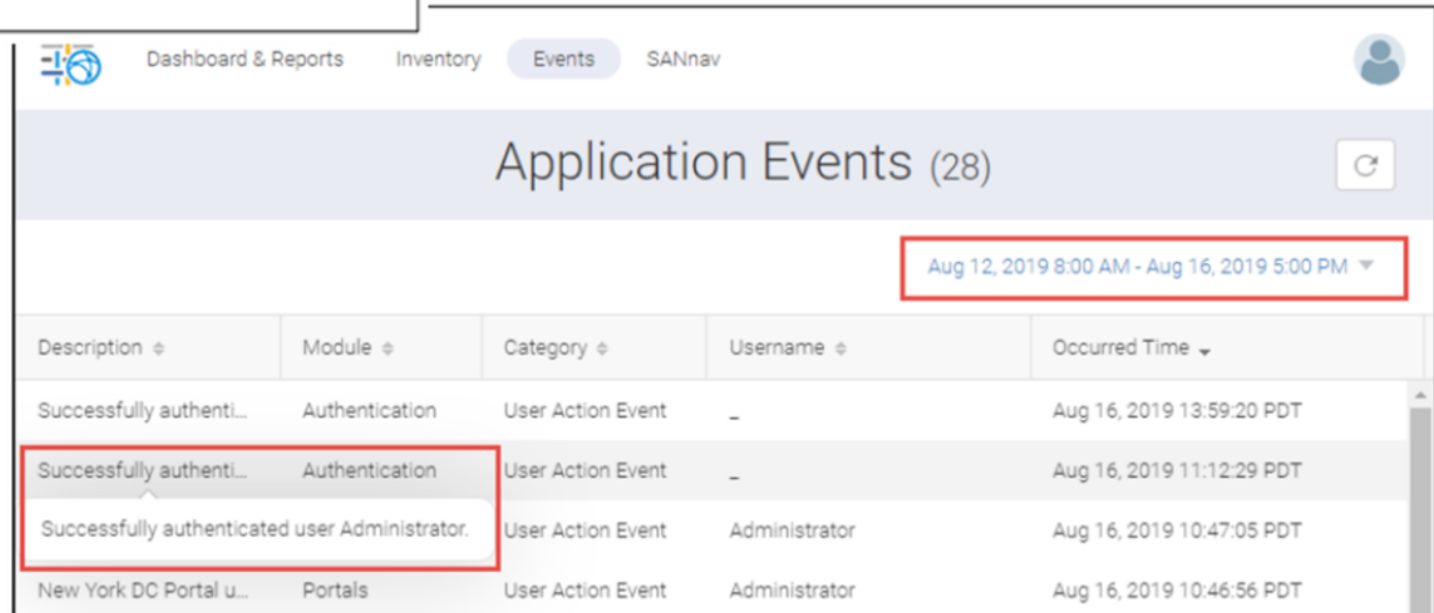
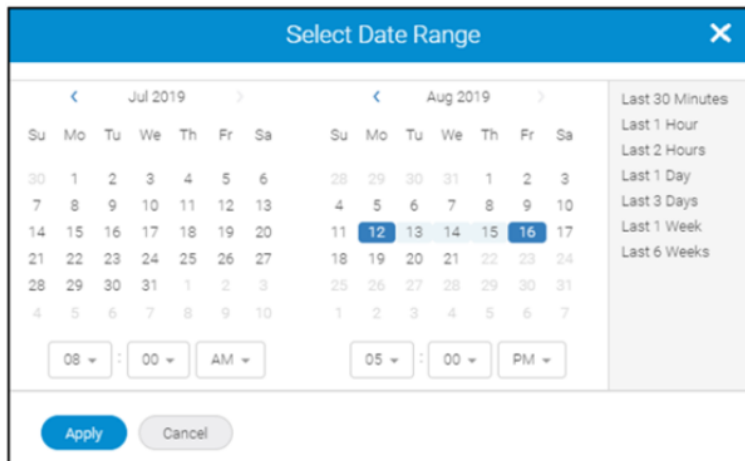
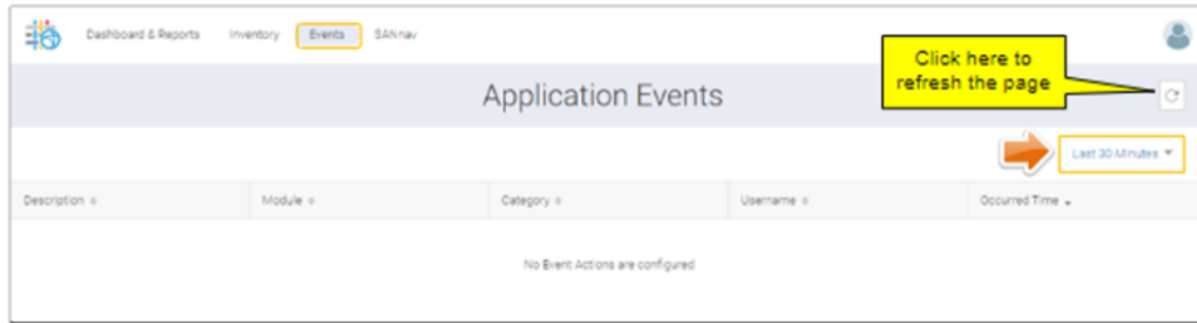
SANnav Global View – Inventory

Users can select an inventory type by clicking the **Switches** drop-down menu in the top left corner.



SANnav Global View – Events

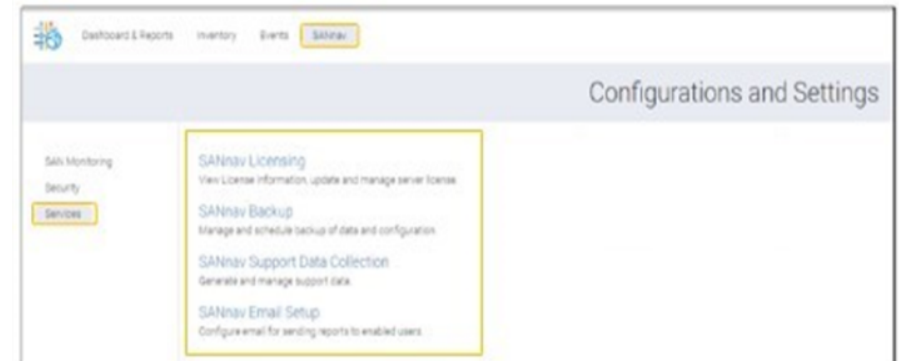
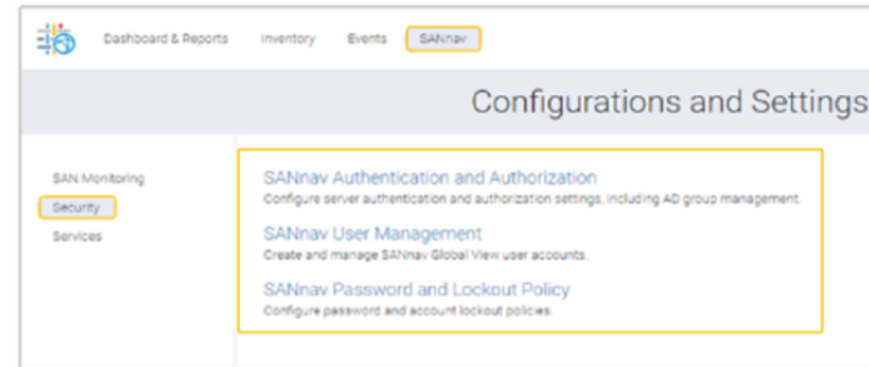
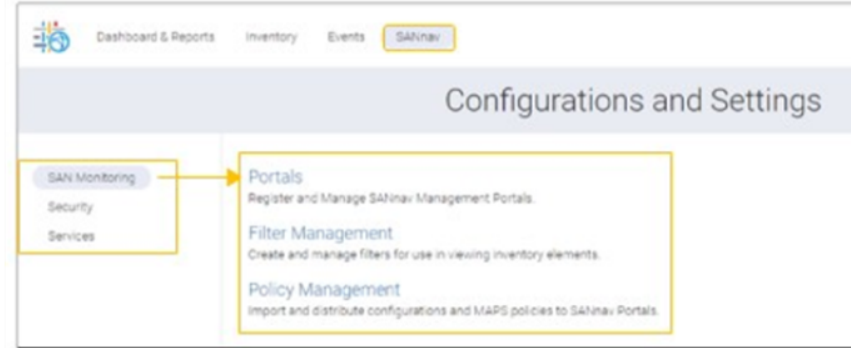
By default, application events recorded in the last 30 minutes will be displayed. To change the default time range, click **Last 30 Minutes** and set a specific date and time range in the **Select Date Range** window.



SANnav Global View – SANnav

On this page, users can change the settings and configurations for the following tasks:

- SAN Monitoring
 - Portals
 - Filter Management
 - Policy Management
- Security
 - SANnav Authentication and Authorization
 - SANnav User Management
 - SANnav Password and Lockout Policy
- Service
 - SANnav Licensing
 - SANnav Backup
 - SANnav Support Data Collection
 - SANnav Email Setup



Useful links

For more information, refer to this SANnav Management Portal and SANnav Global View [documentation](#).