

ThinkShield Web application

- Update Key

Alternative Device key update method if the Mobile application is not available



ThinkShield Web application – Update Key

After replacing a system board, Maintenance users can work through the following procedure to update a Device key using the ThinkShield Web application:

| Steps | Web interface | IPMI |
|-------|--|--|
| 1 | Replace the system board (update the firmware and VPD), and then prepare a laptop | |
| 2 | Open a browser and log in to ThinkShield Portal | |
| 3 | | Connect the laptop to the SE350 XCC network |
| 4 | | Get the Device key with IPMI |
| 5 | Update the key with the Device key obtained using IPMI (If you need to claim the device, use the old activation code from the flyer or asset tag) | |
| 6 | Check whether the device is Standard or Security Pack | |
| 7 | | Issue an IPMI command to change the personality only if it should be Security Pack |

Step



ThinkShield Web application – Update Key

Select a device to open the device tray. Select **Update Key**, and then click **Save**.

The screenshot displays the ThinkShield Web application interface. On the left is a dark sidebar with the 'Lenovo Cloud Portal' logo and a navigation menu including 'Dashboard', 'Device Manager', 'System Updates', 'Device Registry', 'Apps', 'Users', 'Groups', 'Organizations', and 'Developer'. The 'Device Manager' section is active. The main area shows a 'Devices' table with columns for status, device name, and machine type. Three devices are listed: 'device3' (Pending), 'device1' (Ready), and 'device2' (Ready). A blue arrow labeled 'Device tray' points from the 'device3' row to a detailed view on the right. This view is enclosed in a red border and contains sections for 'DETAILS' (Name: device3, Machine Type: 7Z46, Serial Number: SSSSSSSS, Group: no group) and 'ACTIONS'. The 'ACTIONS' section includes buttons for 'Activate', 'Manually Activate', 'Update Key', 'Restore Key Backup', 'Re-sync', and 'Unclaim'. A red arrow points to the 'Update Key' button, and another red arrow points to the 'Save' button at the bottom right of the panel.

| STATUS | DEVICE NAME | MACHINE TYPE |
|---------|-------------|--------------|
| Pending | device3 | 7Z46 |
| Ready | device1 | 7Z46 |
| Ready | device2 | 7Z46 |

DETAILS

Name: device3

MACHINE TYPE: 7Z46 SERIAL NUMBER: SSSSSSSS GROUP: no group

ACTIONS

- Activate**
Select the option if Device has access to the Internet.
- Manually Activate**
Select the option if Device does not have access to the Internet.
- Update Key**
Select the option if Mother board of the Device has been replaced.
- Restore Key Backup**
Select the option if Key update attempt was not successful.
- Re-sync**
Select the option if reset counter was done on Device to reset counter on Portal.
- Unclaim**
Select the option if Device needs to be removed from Organization.

Cancel Save

Step 1 — 2 — 3 — 4 — 5 — 6

ThinkShield Web application – Update Key

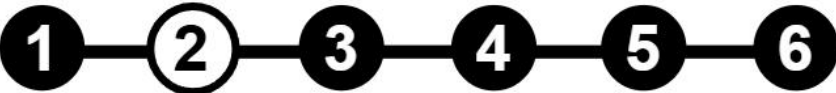
Enter the Activation Code from the defective system board and the Device key of the new system board, and then click **Update**.

- The Activation Code is printed on the asset tag and the flyer that was shipped with the server. **Asset tag and flyer**
- Users can scan the QR code on the new system board to get the Device key, or they can get the information using IPMI commands. For more information, refer to this Knowledge Base [link](#) or click the buttons below to see examples.

QR code

IPMI
command

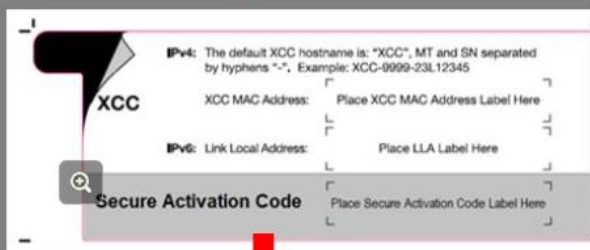
Step



Secure Activation Code on the asset tag and flyer



A new field for the Secure Activation Code has been added to the pull-out asset tag and flyer.



Lenovo **ThinkShield**

Barcode

PN: SP47A58937

ATTENTION: DO NOT THROW AWAY

Note: SE350 with Security Pack is also known simply as SE350 prior to July 2021. You can check whether your system is SE350 with Security Pack or SE350 Standard in Lenovo XClarity Controller.

| | |
|--|---|
| SE350 with Security Pack <ul style="list-style-type: none">SE350 automatic data protection, including intrusion sensor and motion sensor, can be enabled.SED data access can be locked up at tamper events.The system will need to be claimed and activated in order to unlock and access data. Please keep this document for the process.Requires activation to boot up and fully functional. | SE350 Standard (Security Pack disabled) <ul style="list-style-type: none">SE350 automatic data protection, including intrusion sensor and motion sensor, is disabled.Data access will be never locked up. SED management is disabled. Tamper setting is disabled.No activation is required.Claiming the system is optional. Secure Activation Code is needed for claiming.Keep this document for future reference. |
|--|---|

Secure Activation Code

Server information for activation

| | |
|------------------------|--|
| Machine Type | |
| Serial Number | |
| Secure Activation Code | |

Service technician only

| | |
|---|--|
| New secure activation code after system board replacement | |
|---|--|

Secure Activation Code

Server information for activation

| | |
|------------------------|--|
| Machine Type | |
| Serial Number | |
| Secure Activation Code | |

Service technician only

| | |
|---|--|
| New secure activation code after system board replacement | |
|---|--|

- For ThinkSystem SE350 with Security Pack, the Secure Activation Code is used when activating the system or when the system board is replaced.
- For ThinkSystem SE350 Standard, the Secure Activation Code is used when the system board is replaced.

Note: The Secure Activation Code can also be found on the network access tag on the front of the server or using the ThinkShield Edge mobile app.

For mobile App downloads visit:
<https://apps.thinkshield.lenovo.com>

GET IT ON
Google Play

乐商店
Lenovo Store

Download on the
App Store

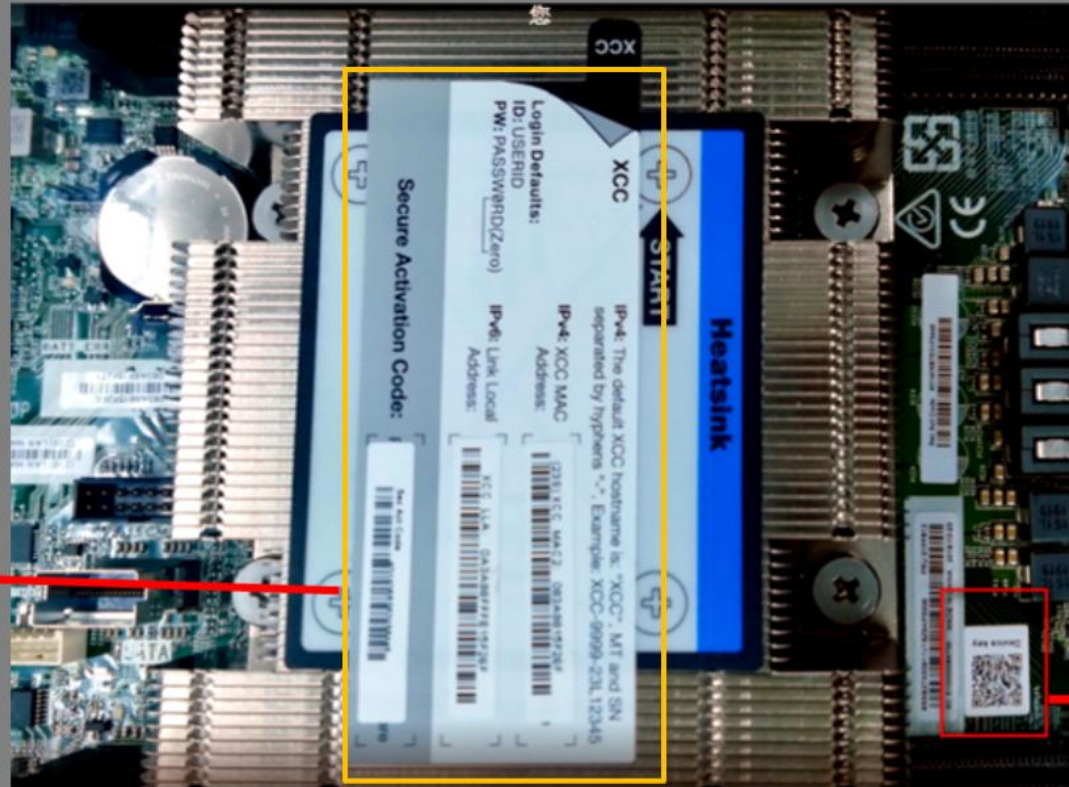
百度手机助手
Baidu Mobile Assistant

QR Code



A QR code has been added to the system board. When you replace a system board, scan the QR code to get the Device key.

A Secure Activation Code sticker will be attached to the heat sink on the new system board. When you replace the system board, peel off the sticker and attach it to the pull-out asset tag.



Secure Activation
Code sticker

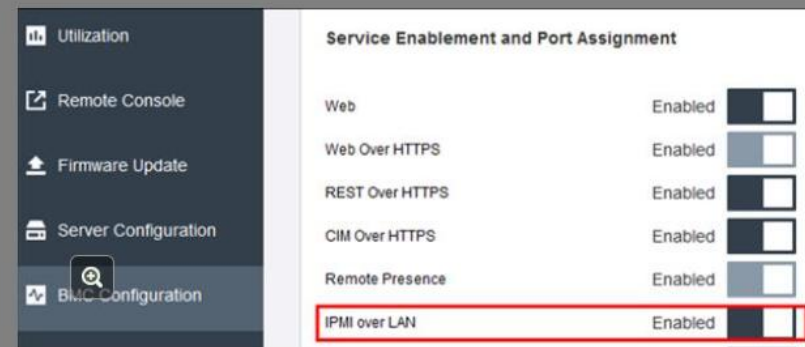


SE350 Device key
QR code

Using IPMI to get a Device key

Enable IPMI in XCC:

- Select **BMC Configuration** → **Network**, and then scroll down to the **Service Enablement and Port Assignment** section.
- Configure the state of the **IPMI over LAN** to **Enabled**.



Connect the laptop to the XCC port that has IPMITool installed, and then run the following command to get the Device key:

```
>ipmitool -I lanplus -U USERID -P PASSWORD -H 192.168.70.125 raw 0x3a 0xf2 0x6
```

Sample output:

```
54 41 8b d7 76 4f 1b 57 bf 63 0e 6b 31 ea 27 98
0b a4 29 e1 b2 12 86 c2 42 70 aa 2d 17 f7 26 ce
88 0c a8 a8 cb e9 0c cd 72 d2 74 05 f7 8b 7d a0
4f f9 3f 9e da 95 8f 1e a8 85 25 10 9a bd fe 9e
```

The SE350 Device key will be (64 bytes, 128 hex chars long):

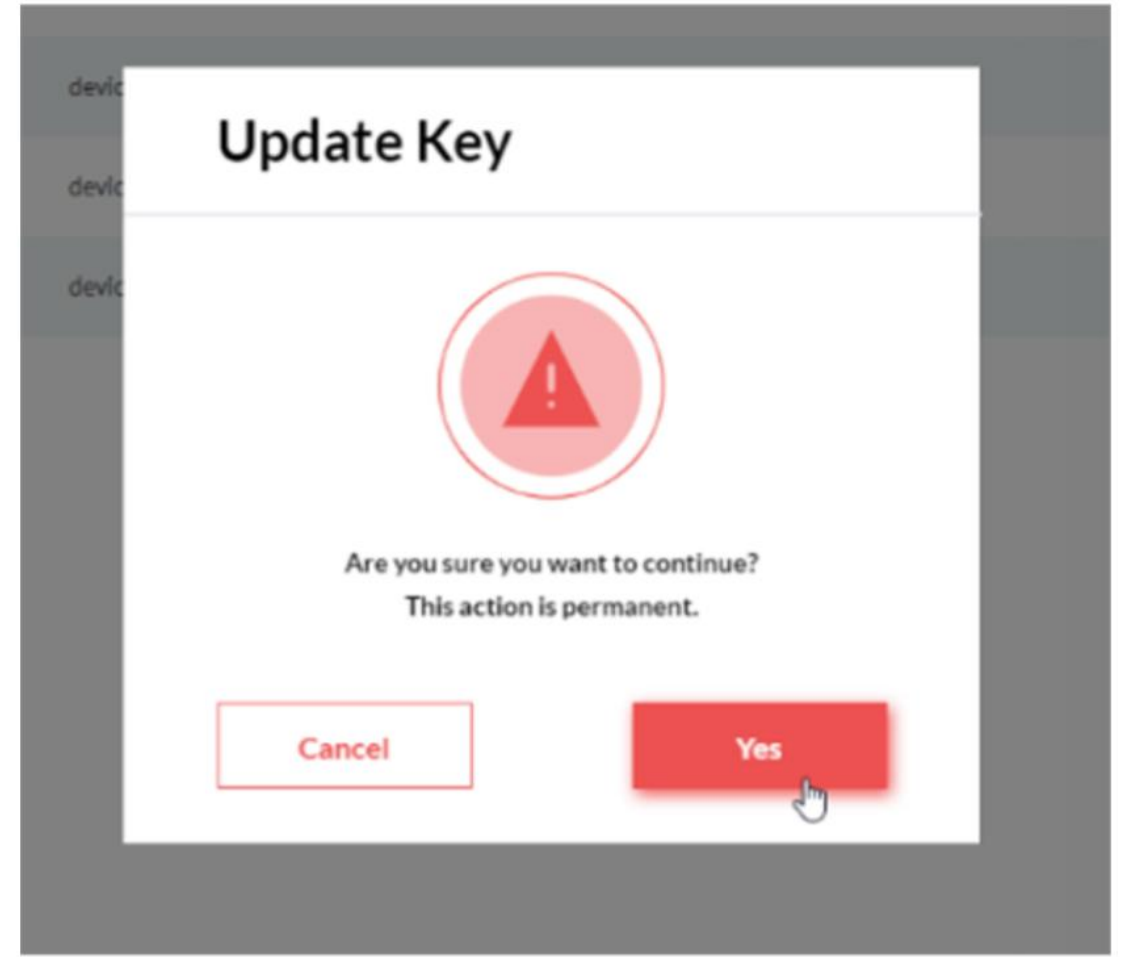
```
54418bd7764f1b57bf630e6b31ea27980ba429e1b21286c24270aa2d17f726ce880ca8a8cbe90ccd72d27405
f78b7da04ff93f9eda958f1ea88525109abdf9e9e
```

Note: In this example, the XCC IP address is 192.168.70.125, the user ID is USERID, and the password is PASSWORD (zero, not capital o)

ThinkShield Web application – Update Key

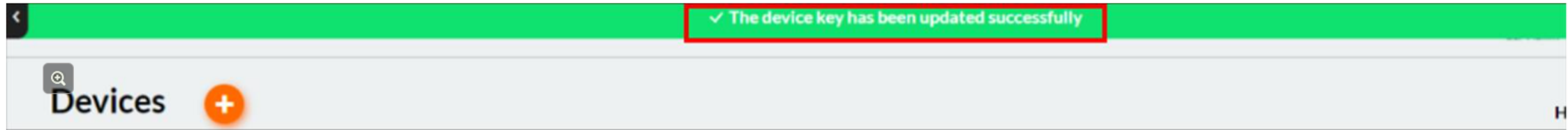
Confirm the action by clicking **Yes** in the **Update Key** pop-up window.

Step



ThinkShield Web application – Update Key

A message will be displayed stating that the Device key was successfully updated.

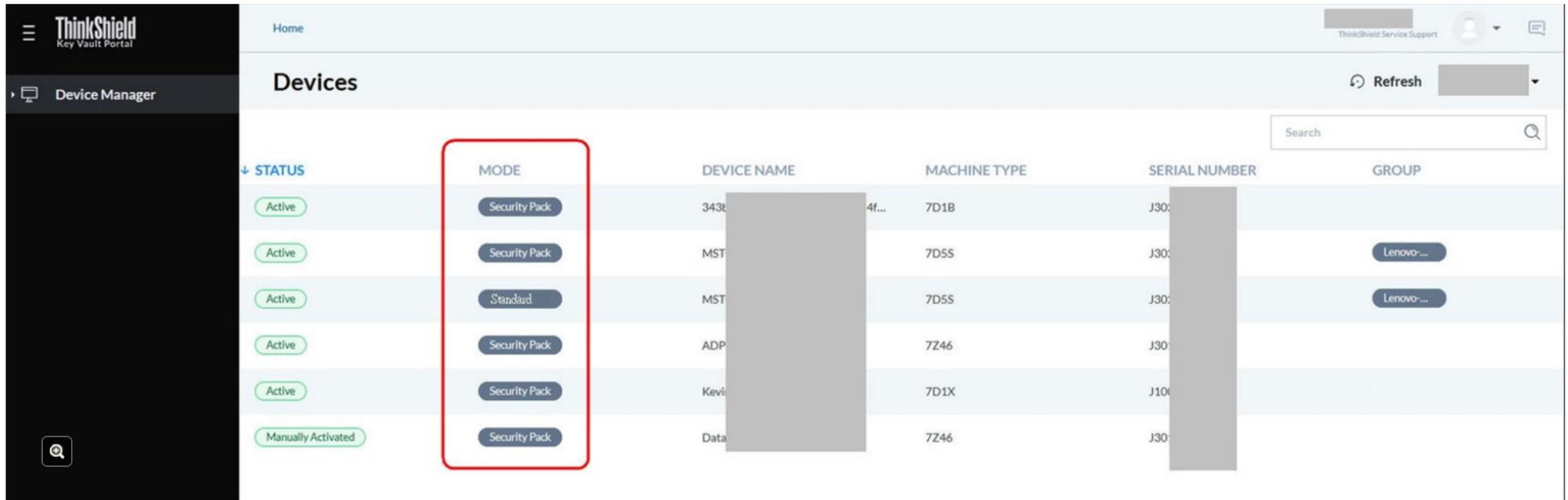


Note: Refer to the [ThinkShield Web application User Guide](#) for more information on how to configure each function in the ThinkShield Web application.

Step **1**—**2**—**3**—**4**—**5**—**6** 

ThinkShield Web application – Update Key

Check whether the device is displayed as Standard or Security Pack. If it should be Security Pack, go to the next step and use an IPMI command to update the device personality.



| STATUS | MODE | DEVICE NAME | MACHINE TYPE | SERIAL NUMBER | GROUP |
|--------------------|---------------|-------------|--------------|---------------|------------|
| Active | Security Pack | 343b... | 7D1B | J30... | |
| Active | Security Pack | MST... | 7D5S | J30... | Lenovo-... |
| Active | Standard | MST... | 7D5S | J30... | Lenovo-... |
| Active | Security Pack | ADP... | 7Z46 | J30... | |
| Active | Security Pack | Kevin... | 7D1X | J10... | |
| Manually Activated | Security Pack | Data... | 7Z46 | J30... | |

Step



ThinkShield Web application – Update Key

Connect the laptop to the XCC port that has IPMITool installed, and then run the following command to set the device mode as Security Pack:

```
>ipmitool -I lanplus -U USERID -P PASSWORD -H 192.168.70.125 raw  
0x3a 0xf2 0x10 0xea 0x1
```

Note: In this example, the XCC IP address is 192.168.70.125, the user ID is USERID, and the password is PASSWORD (zero, not capital o).

Note: Refer to the [ThinkShield Web application User Guide](#) for more information on how to configure each function in the ThinkShield Web application.

Step

