

Hardware replacement tips

Part replacement highlights

Lenovo

Replacing a CPU heat sink

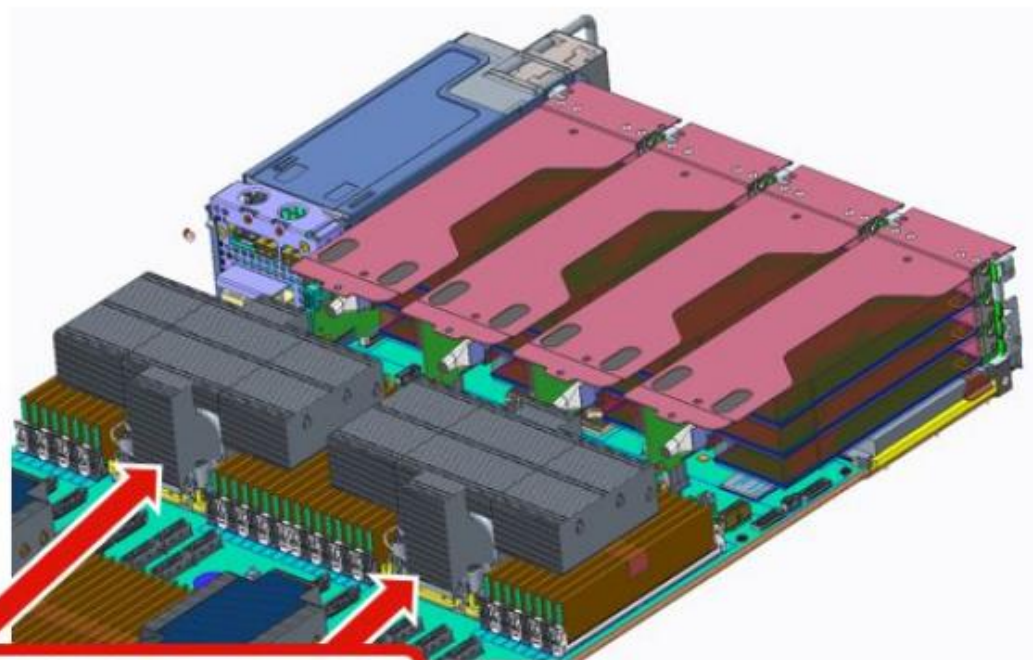
The SR850 V3 CPU heat sink replacement procedure requires a Torx T30 torque screwdriver. Follow the removal sequence instructions and torque settings shown on the heat sink label to remove or install a heat sink.



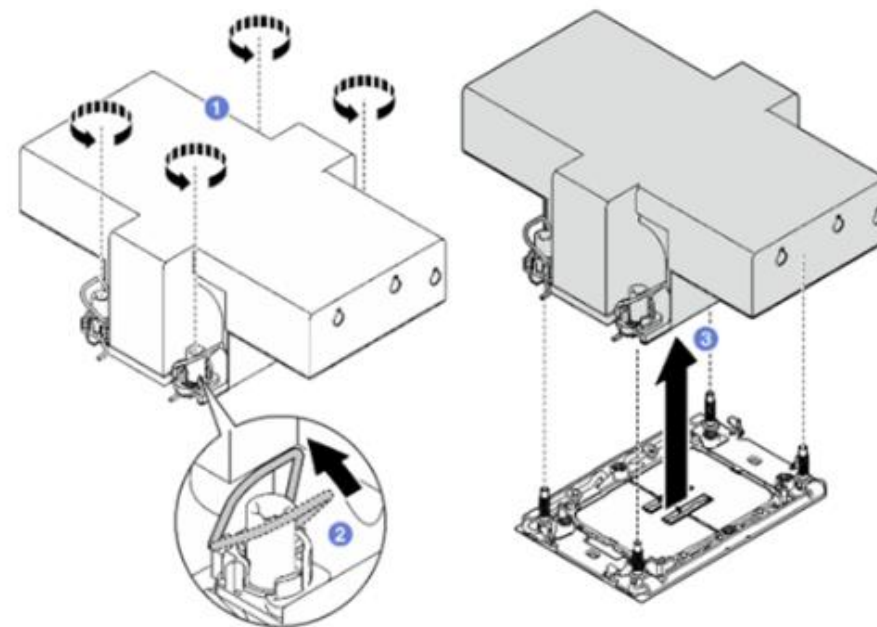
A 1U standard heat sink in an SR850 V3

Replacing a DIMM with a 2U performance heat sink

Before replacing a DIMM under a 2U performance heat sink, service engineers must remove the 2U performance heat sink.



2U performance heat sink



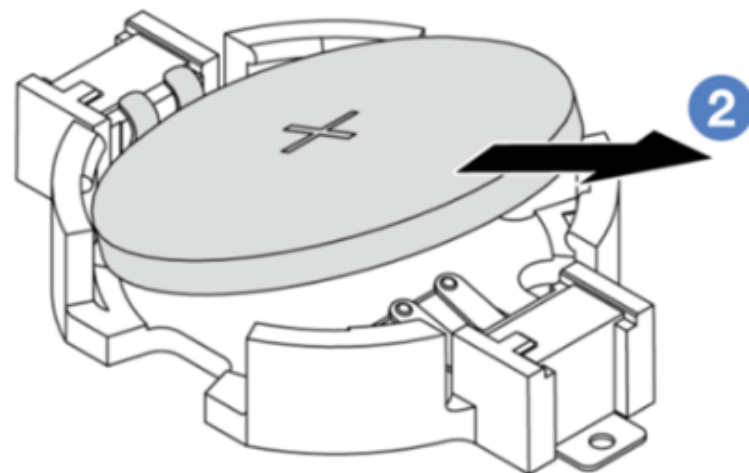
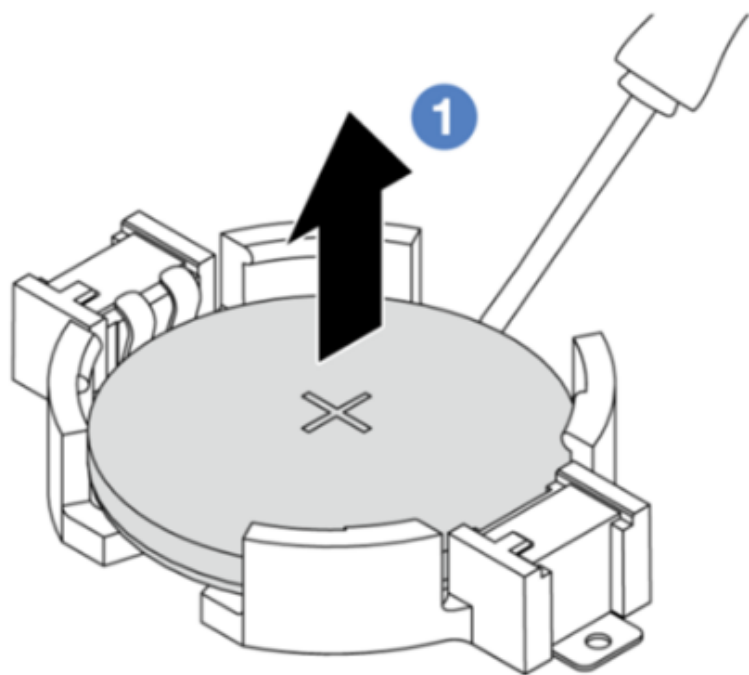
Replacing a firmware and RoT module

After replacing a processor board, service personnel must update the VPD (machine type and serial number) on the processor board. The SR850 V3 VPD update procedure is the same as that used with other ThinkSystem models (using the `onecli config set OneCLI` command).

Replacing an RoT module or system I/O board does not require an update of the VPD. For more information, refer to the LXCE OneCLI common task section of course [ES51757B](#) [Introducing ThinkSystem tools](#), or the Update the Vital Product Data (VPD) section of the ThinkSystem SR850 V3 User Guide on [Lenovo Support](#).

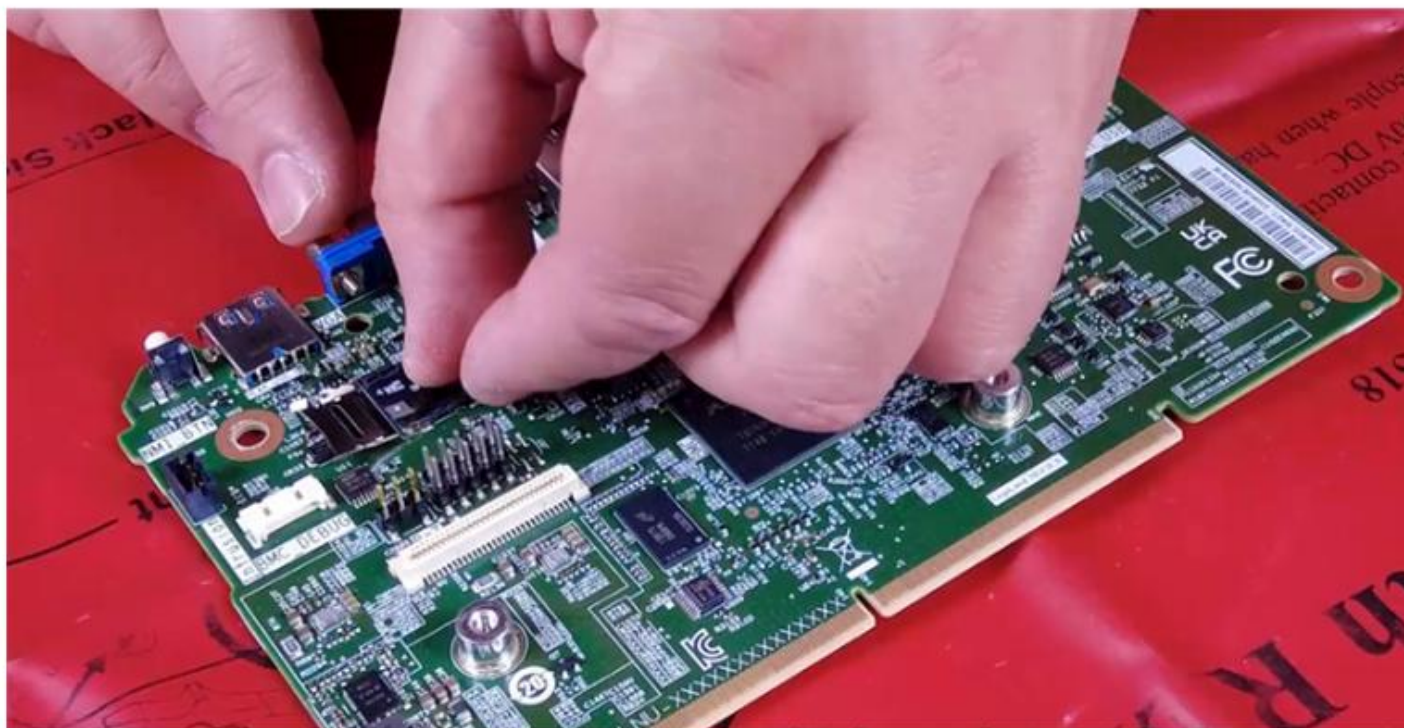
Removing a CMOS battery

To remove a CMOS battery from the SR850 V3 system board, use a flat-head screwdriver to lever the battery from the socket. Do not use your finger to tilt or push the battery, as it might damage the battery socket. Any damage to the battery socket might result in the entire processor board needing to be replaced.



Replacing a system I/O board

If you are replacing the system I/O board, take the firmware and RoT security module and Micro SD card that were removed from the old system I/O board and install them on the new system I/O board.

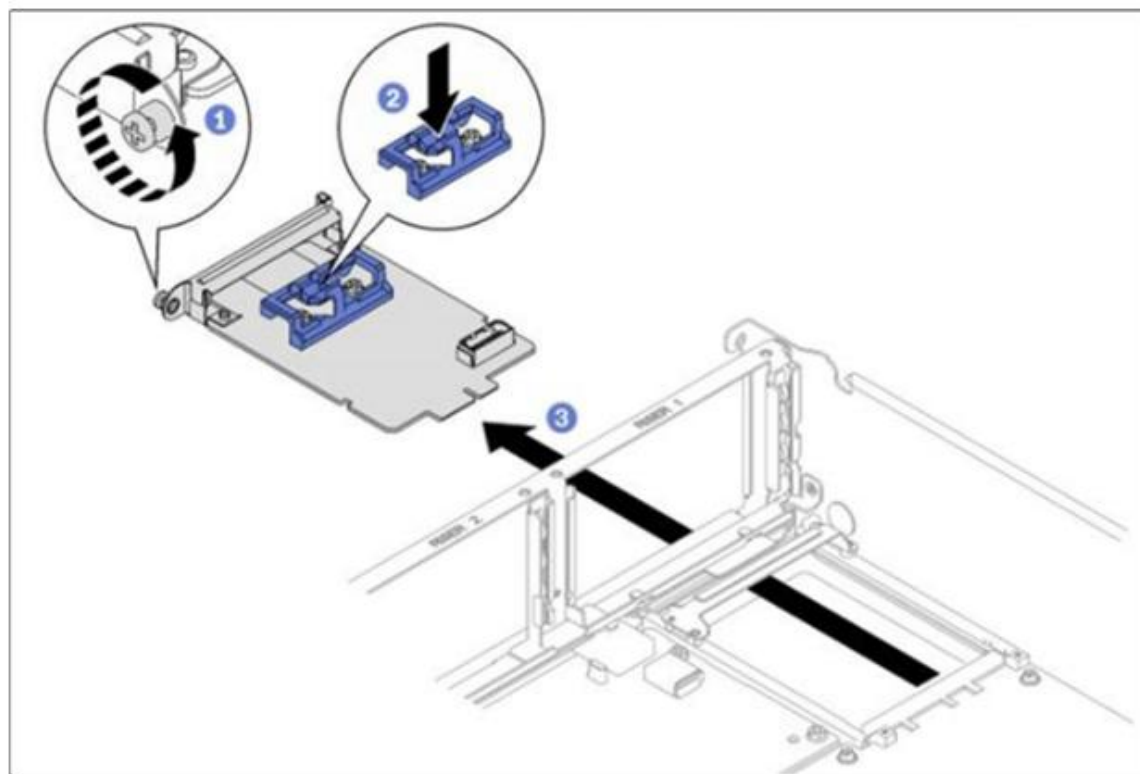


Replacing a Micro SD card on a system I/O board

Replacing a management NIC adapter

Before physically removing a management NIC adapter, access XCC, select Network in the BMC configuration and disable Ethernet Port 2.

After installing a management NIC adapter, select Network in the BMC configuration and enable Ethernet Port 2.



Management NIC adapter removal schematic diagram

Summary

This course enabled you to:

- Describe the ThinkSystem SR850 V3 and its components
- List the SR850 V3 specifications
- Describe the SR850 V3 configurations and block diagrams
- Describe the SR850 V3 management tools
- Describe the problem determination steps and explain how to troubleshoot issues with the SR850 V3