

Smarter technology for all

Introducing Lenovo XClarity One

ES42654

March 2025

Lenovo

Prerequisites

Although there are no specific prerequisites for this course, you should have some knowledge of Lenovo management software tools.

- [ES51757B – Introducing ThinkSystem tools](#)
- [ES52374 – ThinkSystem tools for the ThinkSystem V3 platform](#)
- [ES52678 – ThinkSystem tools for the ThinkSystem V4 platform](#)

Objectives

After completing the course, you will be able to:

- Describe the features of Lenovo XClarity One
- Describe the user roles and organization of Lenovo XClarity One
- Describe the Lenovo XClarity One login procedure
- Explain management hubs and how to connect them to Lenovo XClarity One
- Outline the steps used to add a device to Lenovo XClarity One
- Explain how to perform common tasks such as monitoring devices, submitting a Call Home request, and uploading service data logs

What's new

Lenovo

March 2025 updates

Additional hardware support: Through XClarity Management Hub 2.0, XClarity One can now manage ThinkSystem Intel (code name: Birch stream) V4 servers

Licenses: After purchasing a premium license, XClarity One creates a license group to determine which devices can use that premium license

User improvement: Users have to reset passwords when they expire

Devices: Users can remotely view and interact with the server console for a specific managed device

- From the XClarity One web interface, users can disable firmware updates and remote server console access functions across all management hubs in their organization
- The device inventory includes information about SSD remaining life
- Device usage and trend data is available for system power consumption
- OS images can be mounted remotely as a virtual DVD or USB drive

Alerts and events: Users can create custom alert rules based on occurrence or frequency for multiple events

November 2024 updates

Additional hardware support: Through XClarity Management Hub 2.0, XClarity One can now manage the following servers:

- ThinkAgile HX Series appliances
- ThinkAgile MX Series appliances
- ThinkAgile SX Series appliances
- ThinkAgile VX Series appliances
- ThinkEdge SE Series servers
- ThinkSystem servers

Users: Updated user roles and functions – refer to [the Roles](#) section for more information

Portal management: New features – refer to [the Portal management](#) section for more information

Custom alerts: Users can now set warning and critical usage thresholds and alert durations for processors and memory – refer to [the Custom alerts](#) section for more information

Provisioning: Users can configure templates, which consist of a set of rules and criteria that define the desired configuration for a certain type of server and identify which managed servers are monitored for compliance – refer to [the Provisioning](#) section for more information

Analytics: XClarity One collects memory-diagnostic logs generated by XCC for DDR4 SDRAM memory modules in managed ThinkSystem devices. This data is used to predict probable memory failures and train the predictive AI models – refer to [the Analytics](#) section for more information

Product overview

XClarity One

Lenovo

Lenovo XClarity One overview

Lenovo XClarity One is a cloud platform that provides centralized monitoring, management, and analytics for up to 100 devices or organizations. Through Lenovo XClarity Management Hub 2.0, it can manage a large set of resources across multiple sites to keep track of overall health; collect device inventories, health summaries, and device details; check events; and audit logs. It can also be used to analyze the state of the resources it manages and provide different reports, information, and statistics.

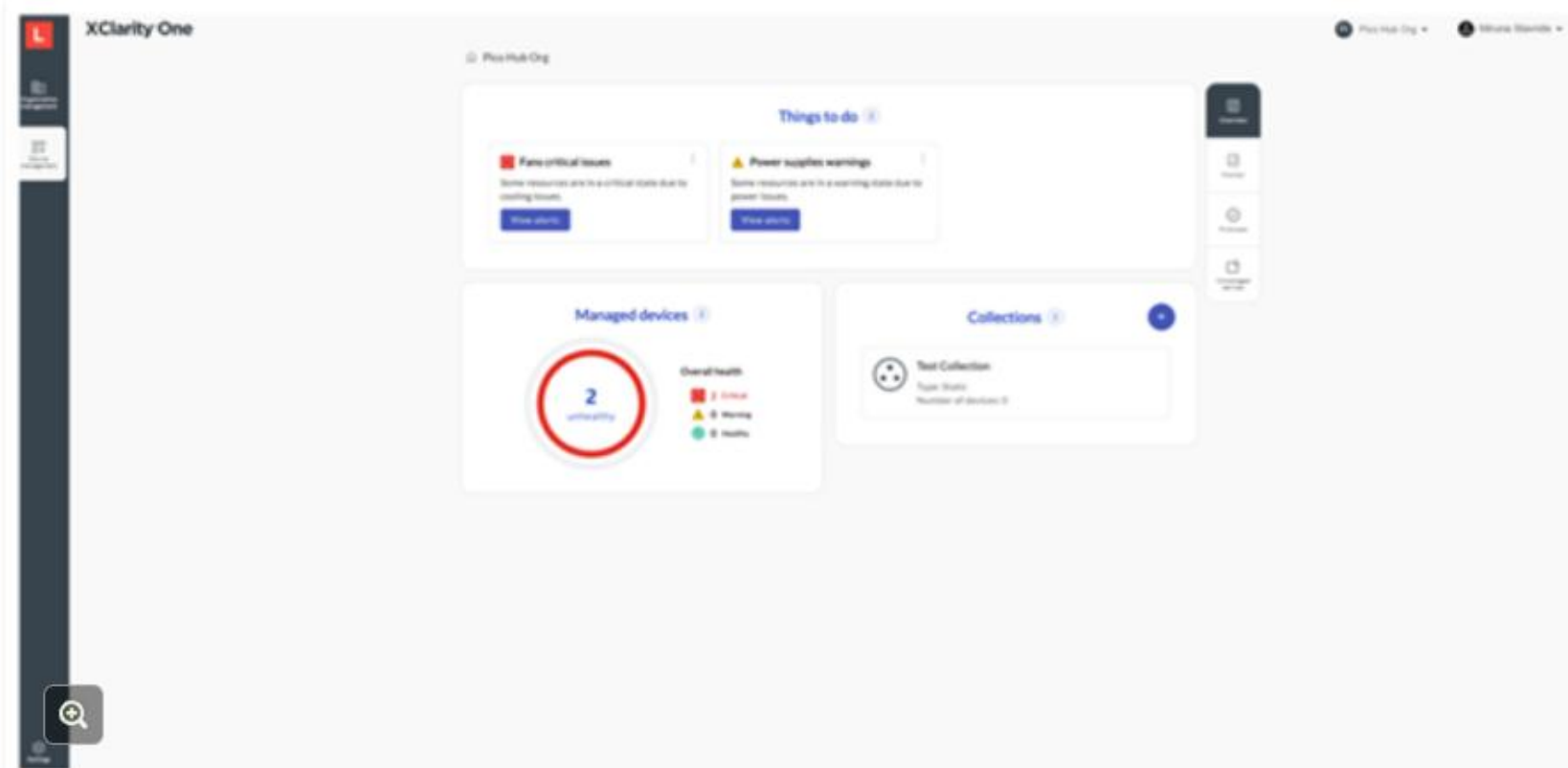


Note: With future releases, XClarity One will be able to manage more devices or organizations.

Administration management

XClarity One administration features include:

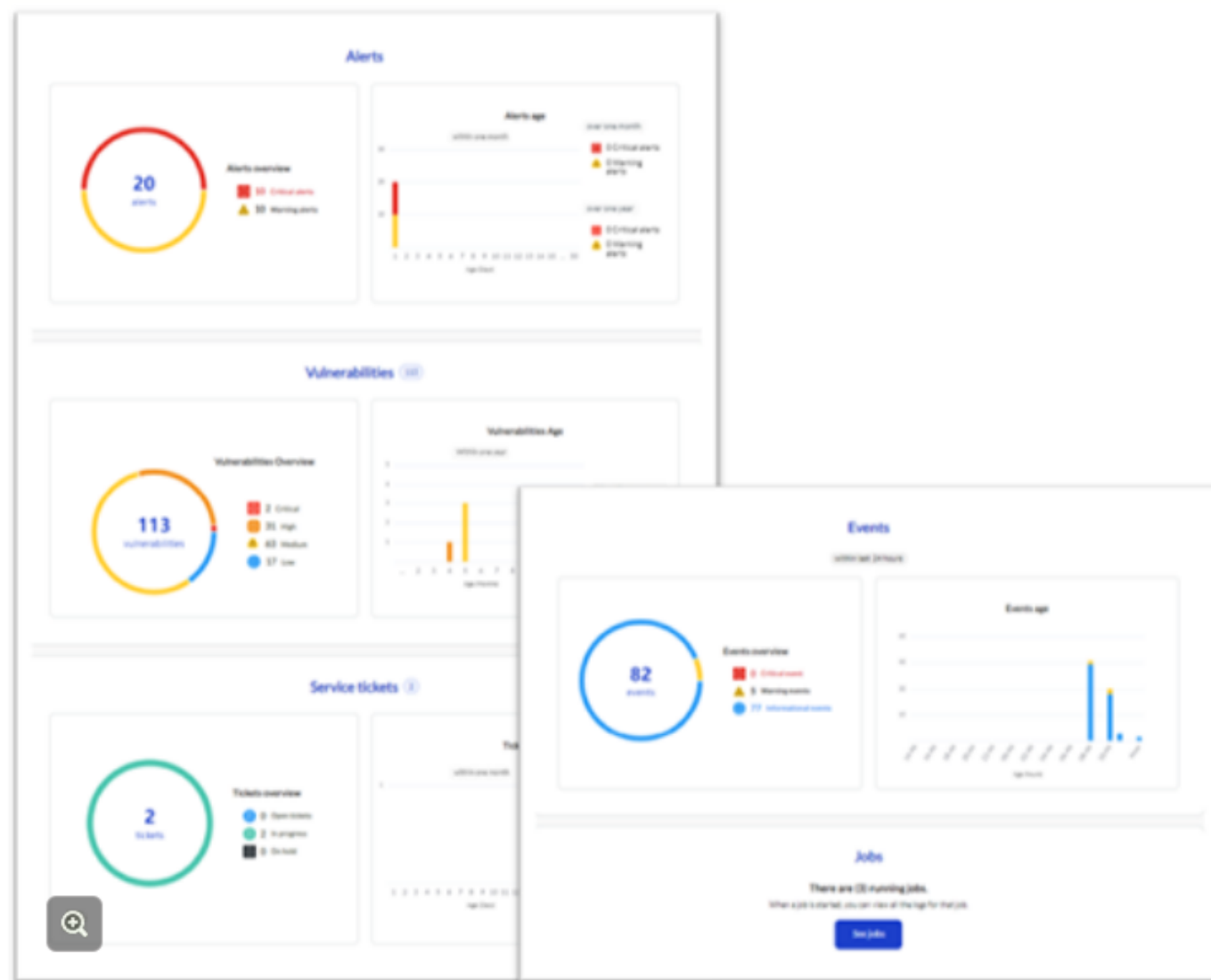
- A task-oriented, user-specific dashboard with a **Things to do** section for urgent tasks
- Device collection and organization overview displays
- Inventory summary displays
- Displays showing device health status summaries, including information about servers
- A firmware compliance section
- Service and Support: Call Home, service tickets management, and warranty



Analytics

XClarity One monitors trends to detect health anomalies in managed devices and presents statistics to help calculate the likelihood of impending failures.

- XClarity One analytics features include:
- A dashboard of various statistics about known health conditions of devices
- Data about known vulnerabilities (CVE) on device firmware components
- A frequency distribution report of device monitoring data
- A summary report of service tickets by status and age
- A view of system management jobs executed over time



XClarity One licensing

- XClarity One currently **has one license** – more will be added in the future
 - **Base License**: It has an **expiration date** and can only be used with a **limited number of devices**; it **enables all MoM functions**

Offering description	Part number	Warranty
Lenovo XClarity One – Managed Device, per end point	7S0X000LWW	With one year of software support and service
Lenovo XClarity One – Managed Device, per end point	7S0X000MWW	With three years of software support and service
Lenovo XClarity One – Managed Device, per end point	7S0X000NWW	With five years of software support and service
Lenovo XClarity One – Memory PFA MD Option	7S0X000PWW	With one year of software support and service
Lenovo XClarity One – Memory PFA MD Option	7S0X000QWW	With three years of software support and service
Lenovo XClarity One – Memory PFA MD Option	7S0X000RWW	With five years of software support and service

ThinkSystem software tools overview

ThinkSystem servers support a comprehensive set of **software tools** to **configure**, **monitor**, **troubleshoot**, **deploy**, and **update systems**. Common tasks can be performed with multiple tools, depending on the server configurations. The table below summarizes each tool and its functional capabilities.

Function	XClarity One – cloud application	Lenovo XClarity Orchestrator	Lenovo XClarity Administrator	Lenovo XClarity Integrator	Lenovo XClarity Energy Manager	Lenovo XClarity Provisioning Manager	Lenovo XClarity Essentials	Lenovo XClarity Controller	Lenovo XClarity Mobile
Multiple systems management	✓	✓	✓	✓	✓		✓		✓
Operating system deployment			✓			✓		✓	
Firmware and driver updates	✓		✓	✓		✓	✓	✓	✓
System configuration			✓	✓		✓	✓	✓	
Watchdog / Alerts	✓	✓	✓	✓	✓			✓	✓
Inventory Listing	✓	✓	✓	✓		✓	✓	✓	✓
Event logs	✓	✓	✓	✓		✓	✓	✓	✓
Power management	✓	✓	✓		✓				✓
Remote Control		✓	✓					✓	
Analytics	✓	✓	✓					✓	
Service and Support	✓	✓	✓					✓	