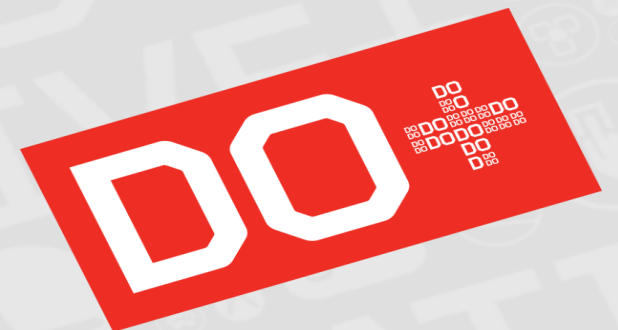


**lenovo**® FOR  
THOSE WHO DO.™

## EBG Server Education - xClarity Administrator: Agenda and Overview

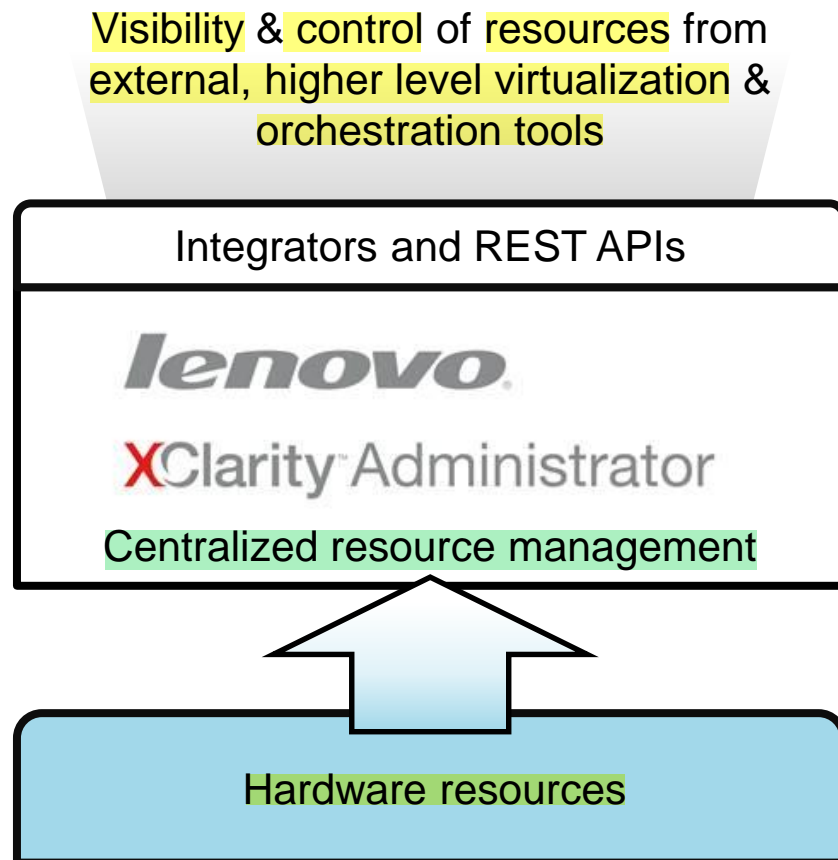
Mark Masbruch | 4/15/15



## ■ Agenda

- Support overview (Brian Boser)
- Virtual Appliance (Trevor Brown)
- Service and Support (Jeff VanHeuklon)
- Resource Discovery, Management, Inventory (Jeanne Christensen)
- Security (Chris Peterson)
- Monitoring and Events (Andy Vrabel)
- GUI Interface (CheKim Chhuor - CSTL for rack mgmt / bulk import discovery; Ryan Randolph for other)
- REST Interface (Debra Angst)
- PowerShell Interface (Quan Yu - CSTL)
- FW Updates and Self-Maintenance (Peter Donovan)
- Configuration Patterns (David Roberts)
- OS Deployment (Andrew Sloma)
- Remote Control (David Stanich)
- Information (Royce Espey)

# Lenovo XClarity Administrator

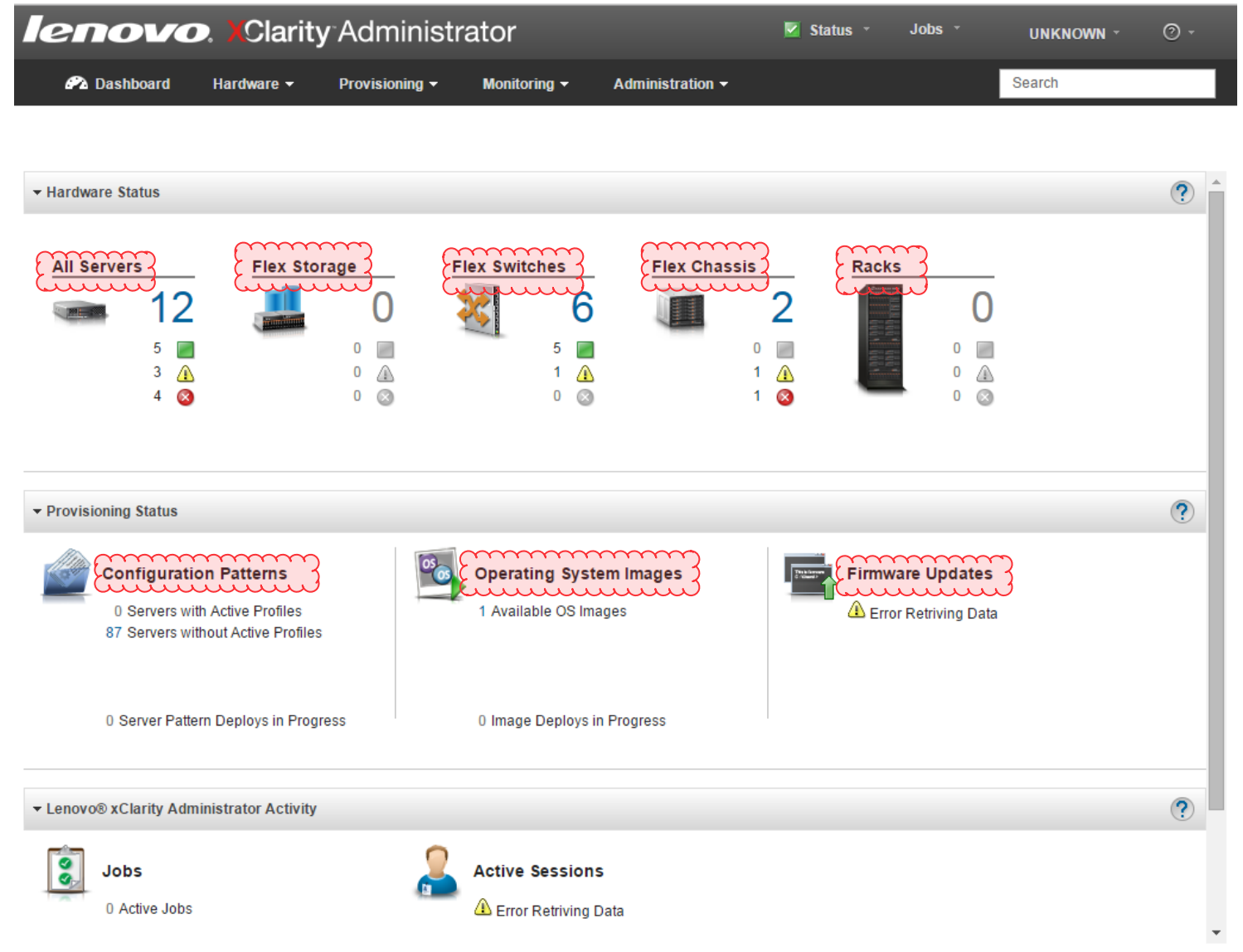


## ***Deliver Lenovo resources faster***

- Discovery & inventory
- Monitoring
- Firmware updates and compliance
- Configuration management
- Deployment of OS to bare metal servers
- Remote Control

## *Simplified user interface*

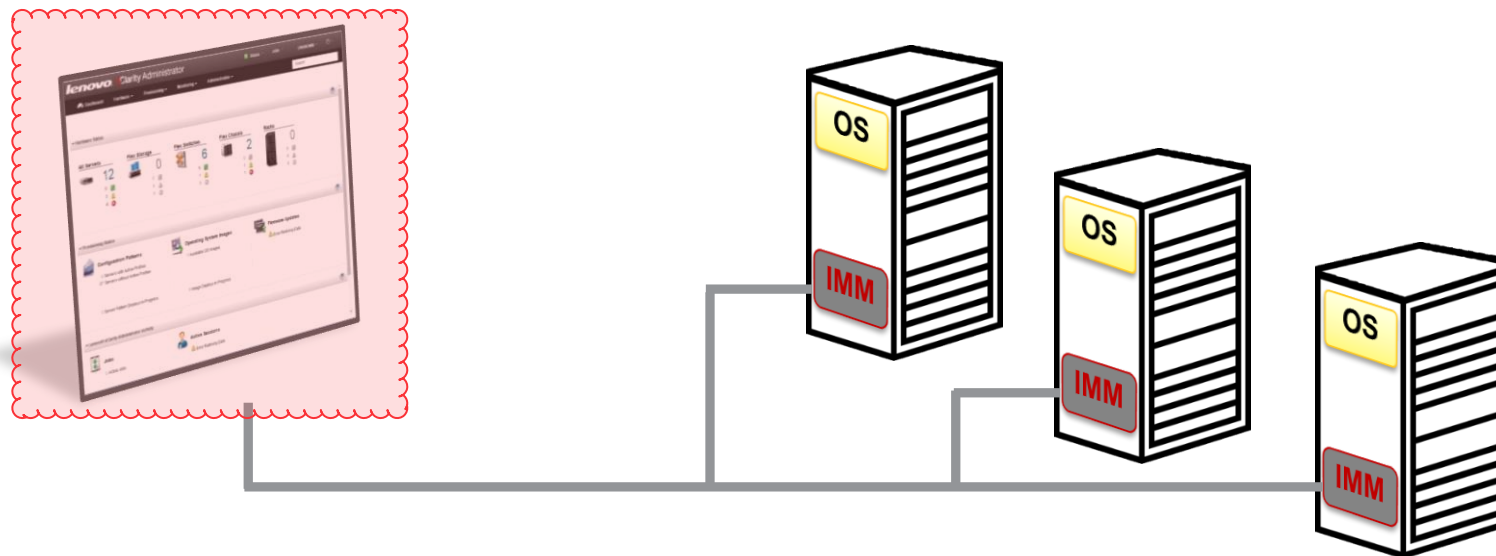
- Based on HTML 5
- Tablet ready
- Find information and execute tasks faster



# Benefits of Agent-Free Management

## ***Eliminate platform agents to reduce complexity***

- No CPU cycles spent on agent execution
- Reclaim on average 1GB RAM and 1-2% CPU
- Consistency in managing systems with no dependency on OS
- One less component to certify in the workload stack
- Non-intrusive to software environment making it more secure



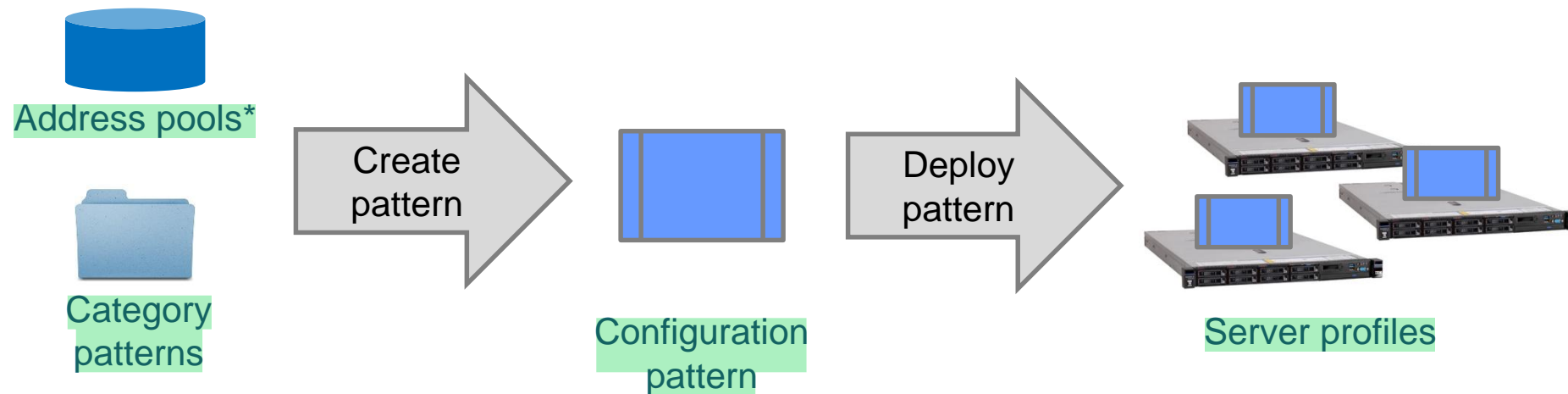
# Firmware Management

## ***Enforce compliance***

- Ensure **firmware** on **managed endpoints** are at specified levels
- Automatically **identify** & **alert** on **non-compliant systems**
- Apply and activate **firmware updates**



# Standardize Configuration Management



## ***Pattern-based configuration***

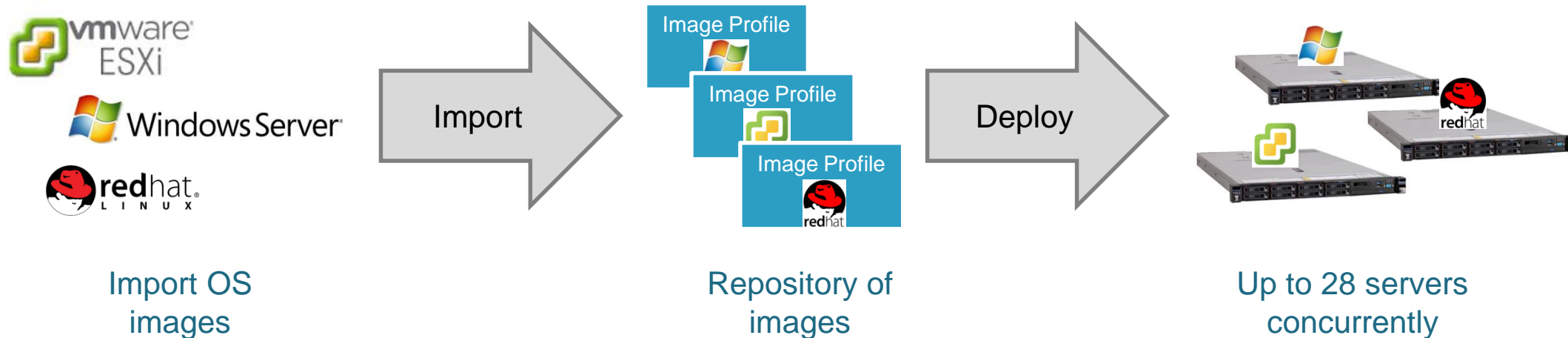
- Quickly provision, pre-provision, or re-provision multiple servers and compute nodes with a single set of defined configuration settings

\* Flex System only

# Deploy Operating Systems to Bare Metal Servers

## *OS deployment*

- Manage firmware, configuration, and OS deployment from a single solution to save time and increase efficiency





# Lenovo XClarity Administrator Supported Servers and Nodes

## Lenovo System x servers



System x3550 M5 (5463)



System x3650 M5 (5462)



System x3850 X6 (6241)



System x3950 X6 (6241)

## Lenovo Flex System



Flex System x240 (9532, 2591)



Flex System x220\* (7906, 2585)



Flex System x440\* (7917, 2584)



Flex System x280 (7196)



Flex System x222\* (7916)



Flex System x480\* (4259, 7903)



Flex System x440 (7167)



Flex System x240\* (8737, 8738)



Flex System x880\* (4259, 7903)



Flex System x480 (7196)



Flex System x280\* (4259, 7903)



Flex System x880 (7196)

\*All features are available except CPU/memory utilization information; RAID-Link Configuration; IMM resource naming  
Manage GA4 or later to Update to latest FW  
(minimum supported GA5B IMM / GA5C CMM)

# Lenovo XClarity Administrator Supported Flex System I/O Modules

- CN4093 10Gb Converged Scalable Switch
- EN4093R 10Gb Scalable Switch
- SI4093 System Interconnect Module
- SI4091 10Gb System Interconnect Module
- CN4093 10Gb Converged Scalable Switch\*
- EN4093R 10Gb Scalable Switch\*
- SI4093 System Interconnect Module\*
- EN2092 1Gb Ethernet Scalable Switch\*
- EN4091 10Gb Ethernet Pass-thru\*

\*All functions are available except: event aggregation and audit logging; IOM configuration patterns (Lenovo CMM required)

# Lenovo XClarity Administrator Supported Flex System I/O Adapters

- Finalizing documentation on detailed support and limitations for Flex and rack server IO Adapters
  - Limitations for Updates, Patterns, and OS Deploy
- Link to support and limitations documentation will be available on support website
  - Information updated as vendors resolve limitations