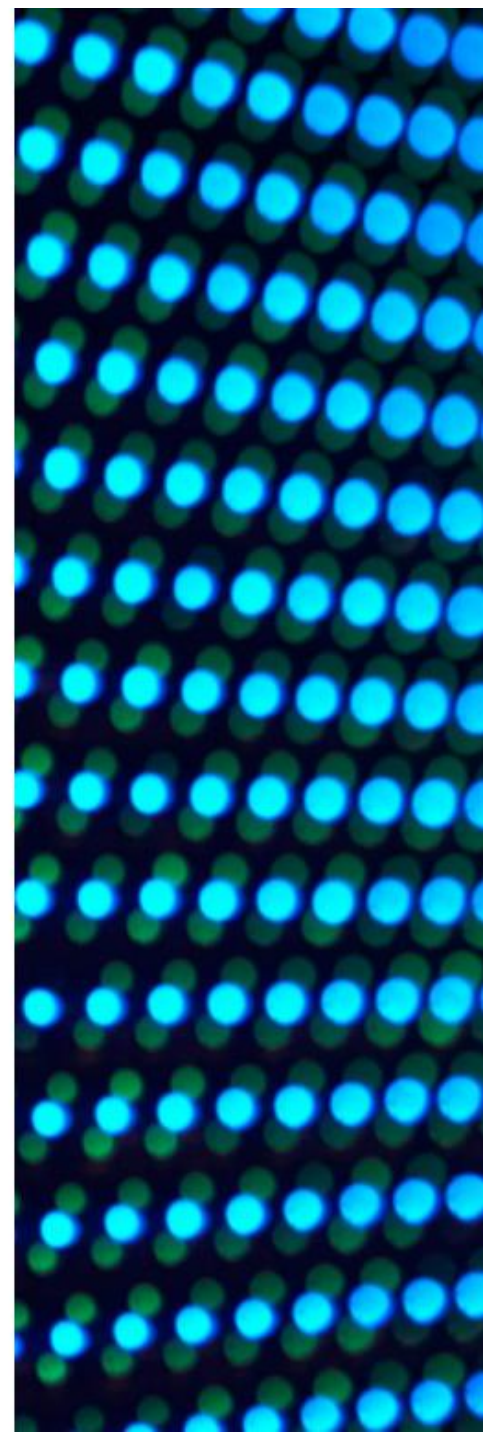


Detailed changes of TD350/RD350/RD450/RD550/RD650



## New CPU, DIMM speed, XClarity Administrator support, and OS support list of TD350/RD350/RD450/RD550/RD650

- New Xeon E5-2600 v4 CPU
- 2400 MHz DIMM is supported
- New machine types:
  - **RD350:** 70QK, 70QL, 70QM, and 70QN
  - **RD450:** 70Q9, 70QA, 70QQ, 70QR, 70QS, 70QT, 70QW, and 70QV
  - **RD550:** 70R3, 70R4, 70R5, 70R6, 70S6, and 70S7
  - **RD650:** 70R7, 70R8, 70R9, 70RA, 70RB, 70RC, 70RD, 70RE, 70RF, and 70RG
  - **TD350:** machine type is unchanged
- XClarity Administrator is supported. Supported features include:
  - Auto-discovery
  - Inventory tracking
  - Monitoring and alerting
  - Call Home

### Updated OS support list:

(Refer to the System ServerProven plan for the most up-to-date list of supported operating systems)

Operating system	Xeon E5-2600 v3 model	Xeon E5-2600 v4 model
SLES 11 for x86 Service Pack 3	✓	✗
SLES 11 for AMD64 & Intel64 Service Pack 3	✓	✗
SLES 12 (64-bit)	✓	✗
SLES 11.4 (32-bit)	✓	✓
SLES 11.4 (64-bit)	✓	✓
SLES 12.1 (64-bit)	✓	✓
Red Hat® RHEL 6.5 (32-bit)	✓	✗
Red Hat® RHEL 6.5 (64-bit)	✓	✗
Red Hat® RHEL 6.6 (32-bit)	✓	✗
Red Hat® RHEL 6.6 (64-bit)	✓	✗
Red Hat RHEL 7.0 (64-bit)	✓	✗
Red Hat® RHEL 6.x (6.7 or later)(32-bit)	✓	✓
Red Hat® RHEL 6.x (6.7 or later)(64-bit)	✓	✓
Red Hat RHEL 7.1 (64-bit)	✓	✗
Red Hat RHEL 7.2 (64-bit)	✓	✓

✓ Supported ✗ Not supported



## TD350/RD350/RD450/RD550/RD650 front chassis changes

The following changes have been made to the front chassis:

Model	2.5-inch HDD configuration	3.5-inch HDD configuration
RD350	<ul style="list-style-type: none"><li>• Removed DisplayPort</li><li>• New Lenovo logo</li><li>• Added VGA port</li><li>• USB ports relocated</li></ul>	<ul style="list-style-type: none"><li>• Removed DisplayPort</li><li>• New Lenovo logo</li><li>• Added VGA port</li><li>• USB ports relocated</li></ul>
RD450	<ul style="list-style-type: none"><li>• Removed DisplayPort</li><li>• New Lenovo logo</li><li>• Added VGA port</li><li>• USB ports relocated</li></ul>	<ul style="list-style-type: none"><li>• Removed DisplayPort</li><li>• New Lenovo logo</li><li>• Added VGA port</li><li>• USB ports relocated</li></ul>
RD550	<ul style="list-style-type: none"><li>• New Lenovo logo</li></ul>	<ul style="list-style-type: none"><li>• Removed DisplayPort</li><li>• New Lenovo logo</li><li>• Added VGA port</li><li>• USB ports relocated</li></ul>
RD650	<ul style="list-style-type: none"><li>• Removed DisplayPort</li><li>• New Lenovo logo</li><li>• Added VGA port</li><li>• USB ports relocated</li></ul>	<ul style="list-style-type: none"><li>• New Lenovo logo</li></ul>
TD350	<ul style="list-style-type: none"><li>• No changes</li></ul>	<ul style="list-style-type: none"><li>• No changes</li></ul>

## RD450 and RD650 front chassis changes



RD450 2.5-inch configuration (front view)



RD450 3.5-inch configuration (front view)



RD650 2.5-inch configuration (front view)



RD650 3.5-inch configuration (front view)

The changes on the chassis are highlighted in yellow.  
Move your mouse pointer over highlights for more information



## RD350 and RD550 front chassis changes



RD550 3.5-inch configuration  
(front view)



RD350 2.5-inch configuration  
(front view)



RD350 3.5-inch configuration  
(front view)

The changes on the chassis are highlighted in yellow.  
Move your mouse pointer over highlights for more information

## TD350/RD350/RD450/RD550/RD650 rear chassis changes

The following changes have been made to the rear chassis:

Model	List of changes
RD350	<ul style="list-style-type: none"><li>• No changes</li></ul>
RD450	<ul style="list-style-type: none"><li>• No changes</li></ul>
RD550	<ul style="list-style-type: none"><li>• Removed COM port</li><li>• Removed DisplayPort</li><li>• Added VGA port</li></ul>
RD650	<ul style="list-style-type: none"><li>• Removed COM port</li><li>• Removed DisplayPort</li><li>• Added VGA port</li></ul>
TD350	<ul style="list-style-type: none"><li>• No changes</li></ul>

## RD550 and RD650 rear chassis changes



Previous version



New version

RD550 rear view



Previous version



New version

RD650 rear view

The changes on the chassis are highlighted in yellow  
Move your mouse pointer over highlights for more information

## Summary

The completion of this course enabled you to:

- Describe the changes made to the ThinkServer servers TD350, RD350, RD450, RD550, RD650, NeXtScale nx360 M5, Flex x240 M5, System x servers x3550 M5, and x3650 M5 that support the most recent Intel Xeon E5-2600 v4 processor